

Family Support Continuum

Performance Report

January to March 2018 (Q4)



Contents

Foreword from Director of People and Headline Figures

Section 1 – Statutory Services

Headline Figures – Statutory Services

Child & Family

Youth Justice & Early Intervention (Post Court)

Education – EOTAS

Section 2 – Early Help / Prevention

Headline Figures – Early Help / Prevention

Youth Justice & Early Intervention (Pre Court)

Young People Services – Pre 16

Young People Services – Post 16

Early Intervention Service - TAF

Early Intervention Service – Family Partnership Team

Early Intervention Service – Family Wellbeing Team

Early Intervention Service – Jigso

Partnership & Commissioning Team – DA Hub

Section 3 – Programme Overview

Section 4 – Other Specialist Areas

Education

Education – Education Welfare Service

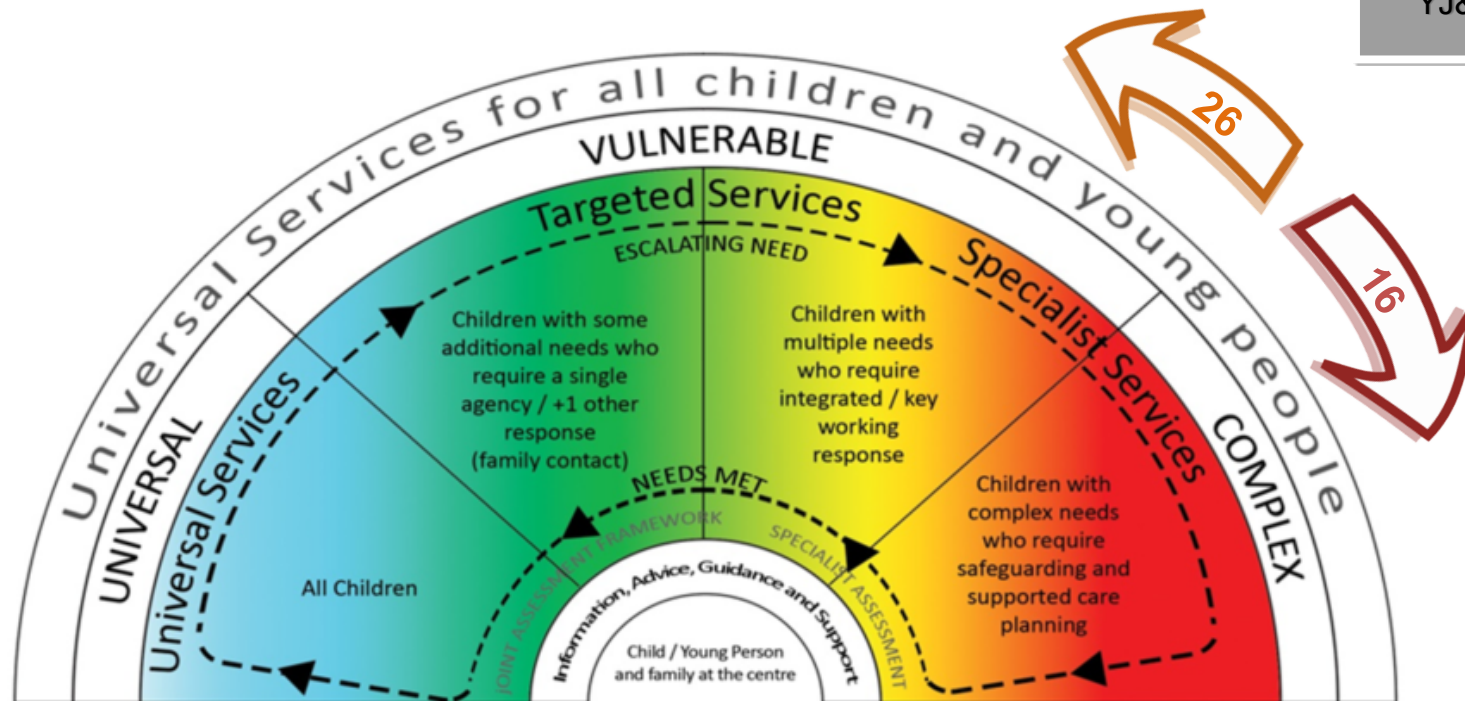
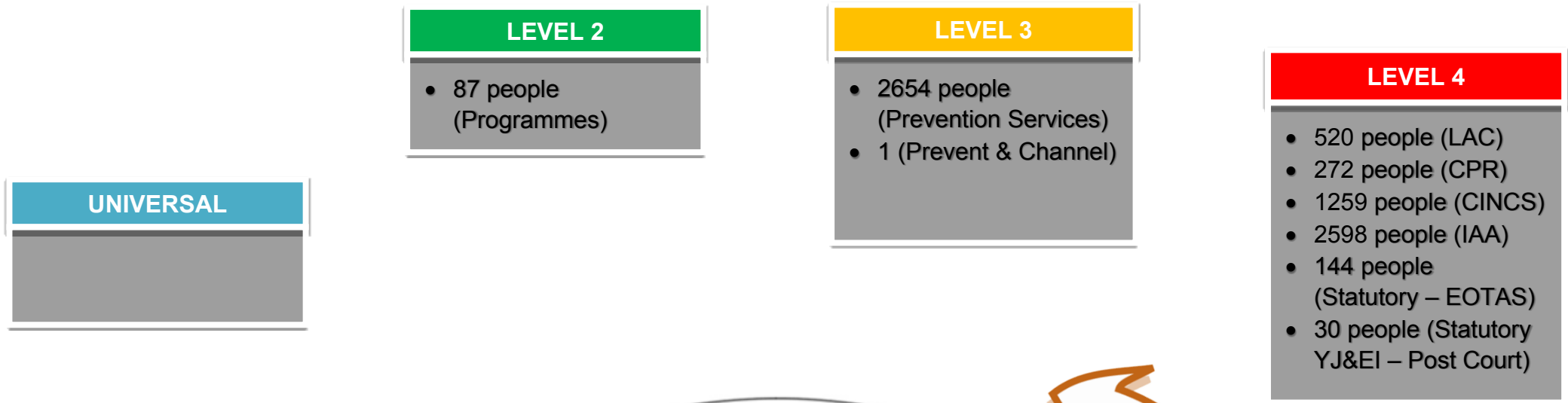
Careers Wales – NEET

Partnership & Commissioning Team – Prevent & Channel (Under 18s)

Teenage Pregnancy in Swansea

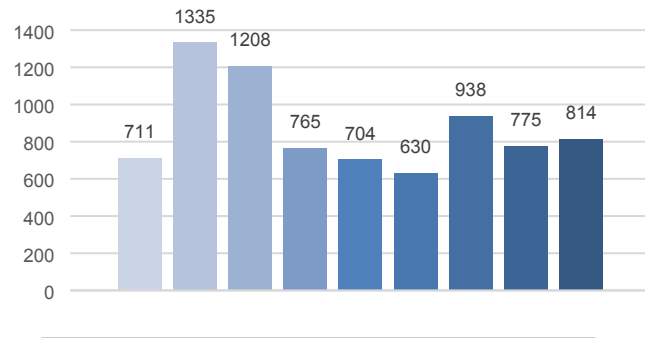
Section 5 – Notes

Headline Figures – Individuals On Caseloads during Quarter 4 (Jan-Mar), 2017-18

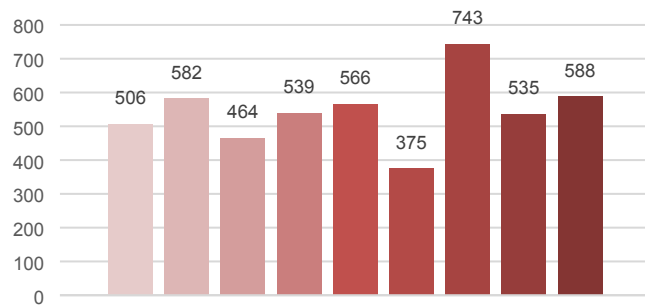


Headline Figures

1431 individuals were on caseloads in Q4



1866 requests for support were received in Q4



(The charts above include average figures for the month.
They may also include duplicates.)

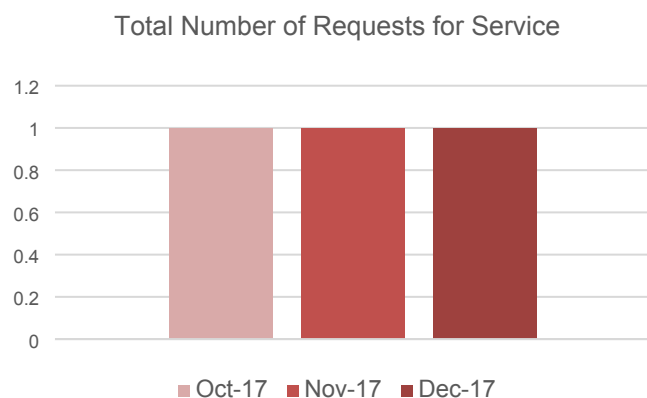
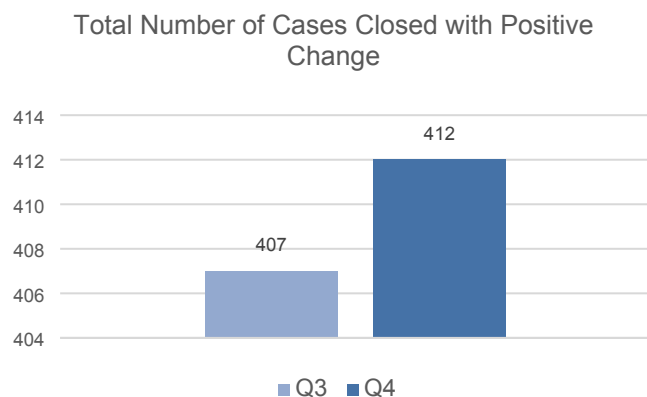
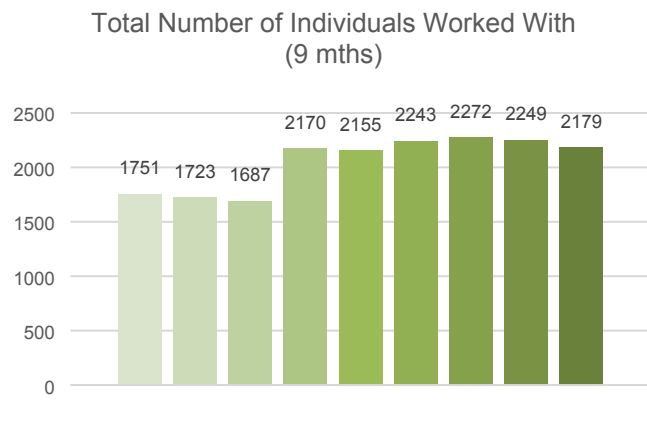
Foreword from the Director of People:

????

Section 1 – Statutory Services



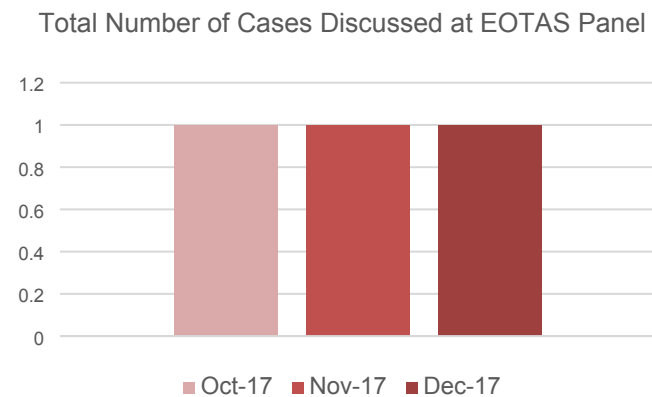
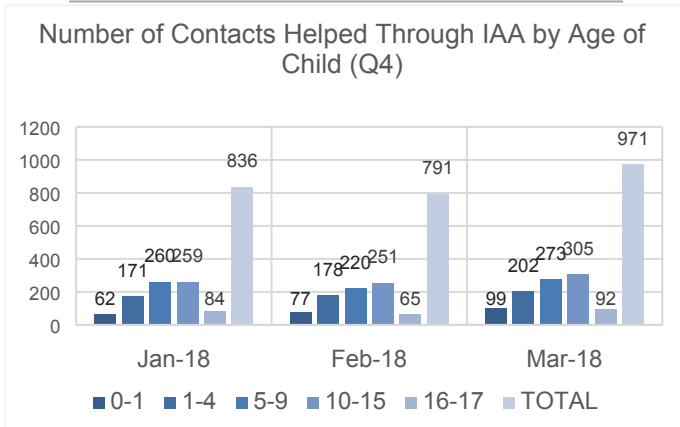
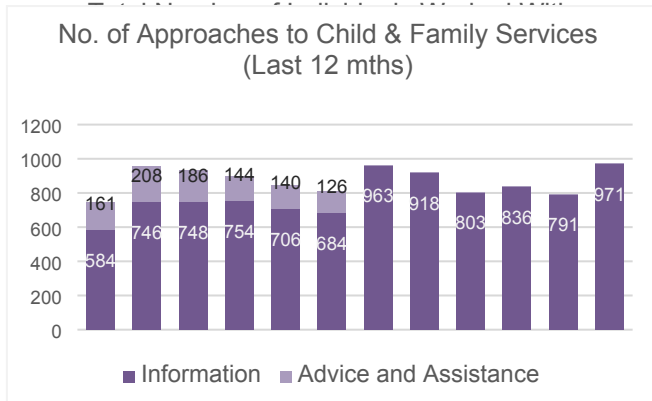
Headline Figures – Statutory Overview



Quarterly Overview – All Statutory Services	Totals
Total number of individuals worked with	2273
Total number of cases closed with positive change	412
Total number closed due to refused engagement / stopped engagement	
Total number of consultations undertaken	2598
Total number of requests for service (referrals)	

(The charts on this page include average figures for the month. They may also include duplicates.)

Headline Figures – Statutory Services Consultation Overview

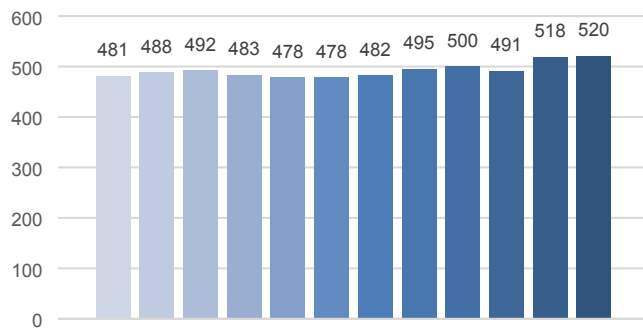


Quarterly Overview	Totals
Number of approaches to Child & Family Services	2598
Number of contacts helped through IAA	2598
Total number of pupils referred to EOTAS Panel	No data available

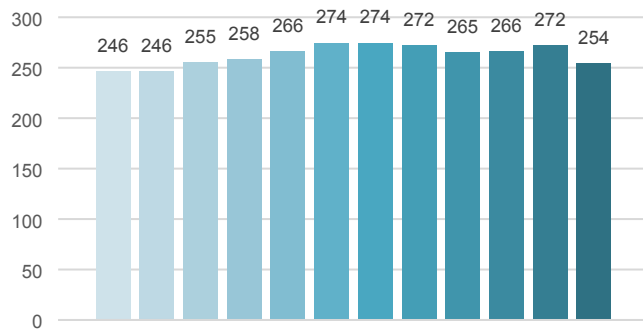
(The charts on this page include average figures for the month. They may also include duplicates.)

Statutory Services – Child & Family

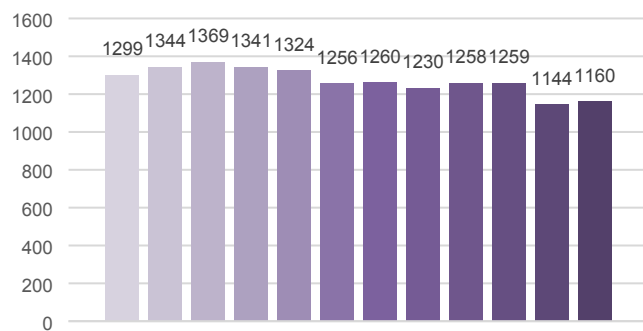
LAC Population (Last 12 mths)



CPR Population (Last 12 mths)



CINCS Population (Last 12 mths)

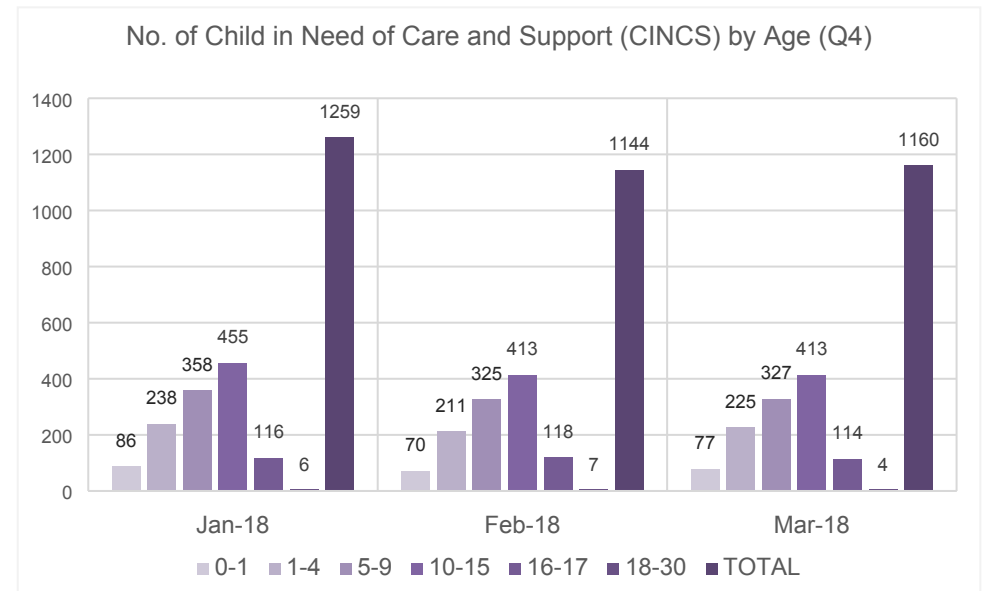
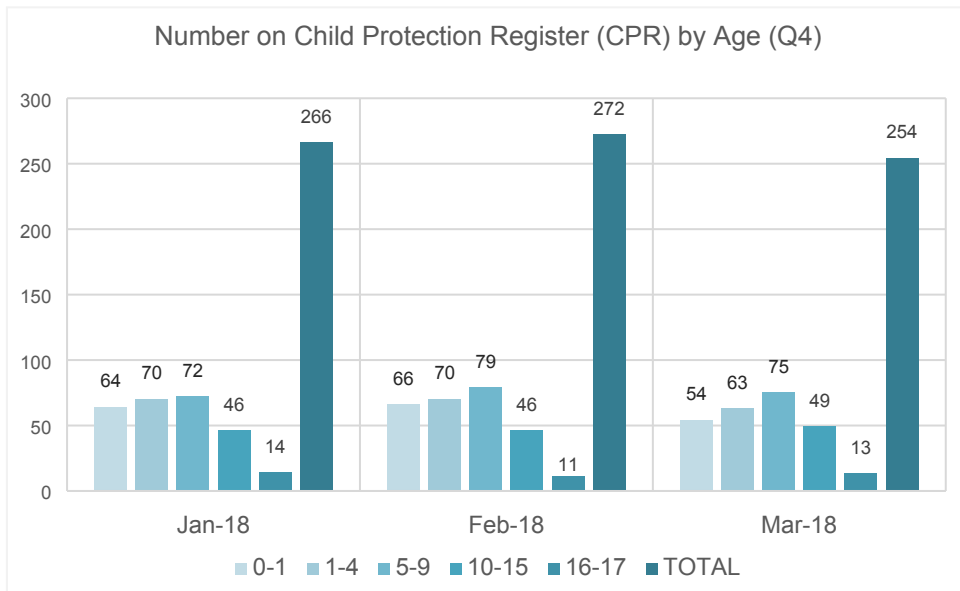
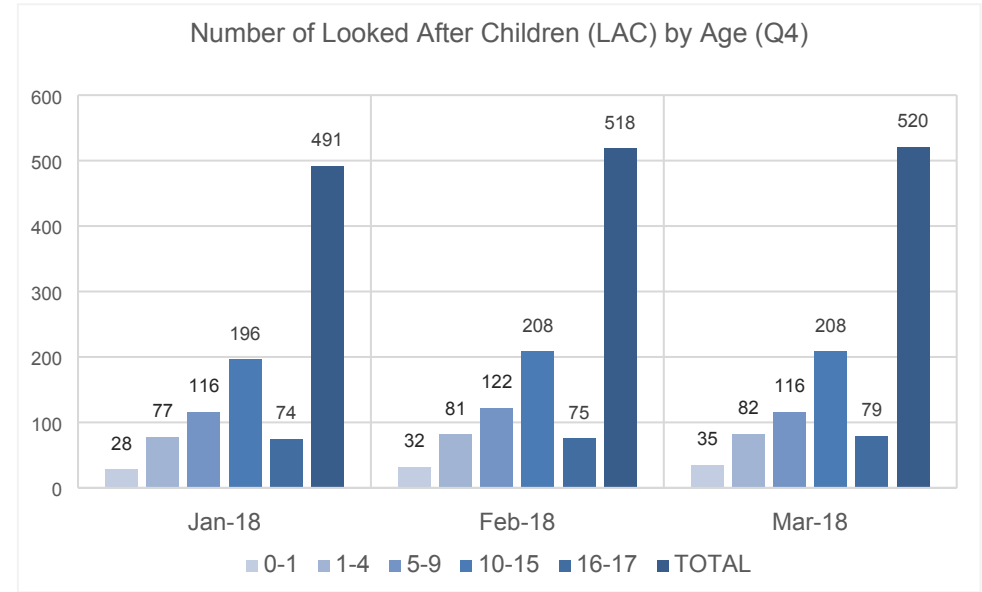
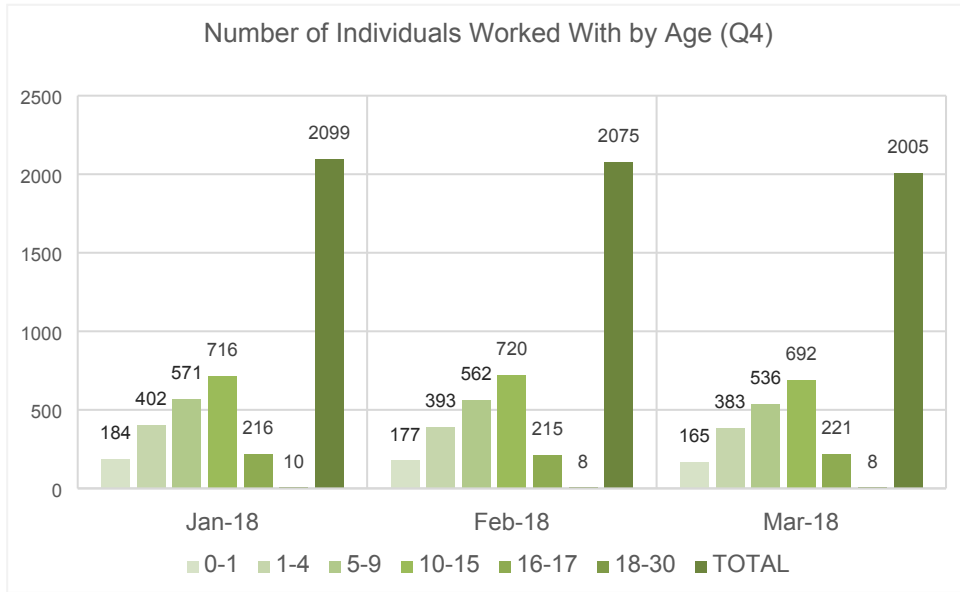


Quarterly Overview	Totals
Total number of individuals worked with	2099
Total number of Looked After Children	520
Total number on Child Protection Register	272
Total number of Child in Need of Care and Support (CINCS)	1259
Total number of contacts helped through provision of information (IAA)	2598
Total number of cases under Special Guardianship or Child Arrangement Order	277
Total number ceased to be looked after	42
Total number of cases closed	412

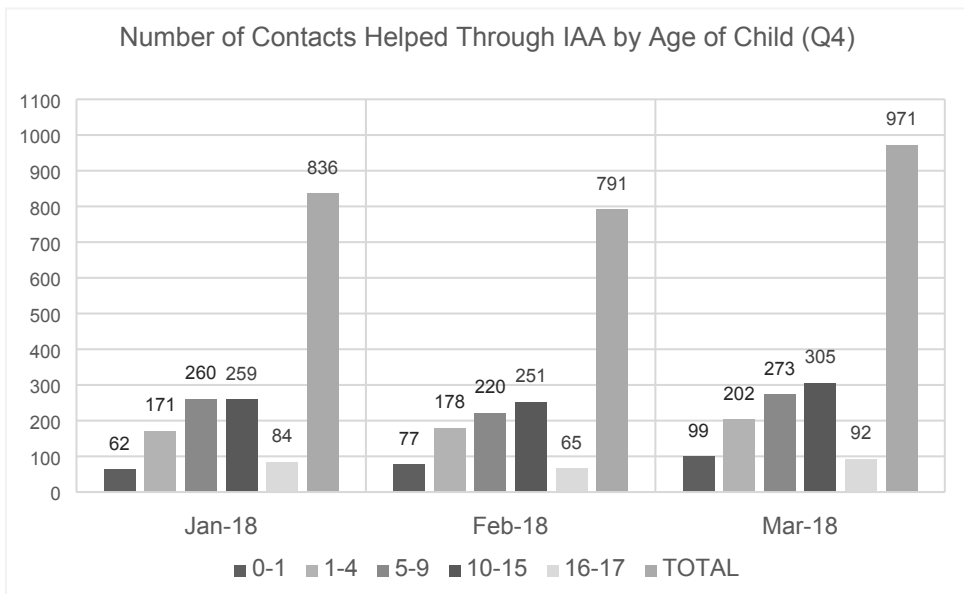
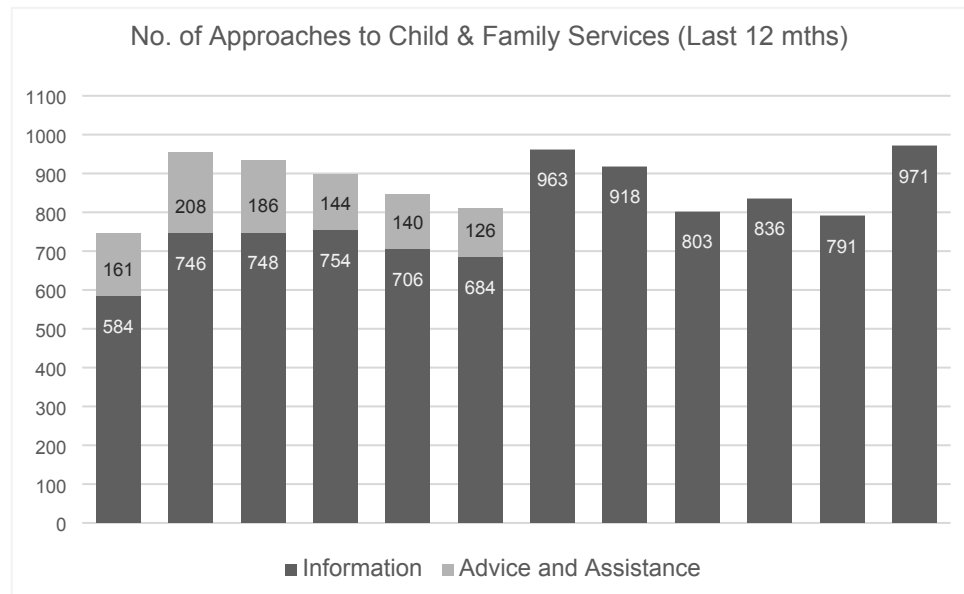
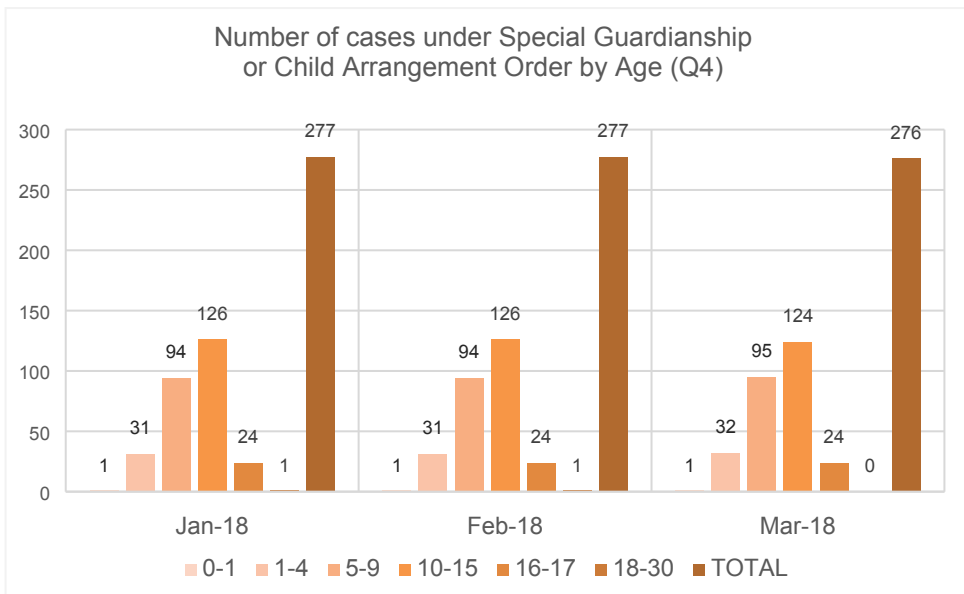
Some of the above are snapshot figures as at the end of the quarter rather than a total across the three months

What's working well?	What are we worried about?	What do we need to do?

Statutory Services – Child & Family

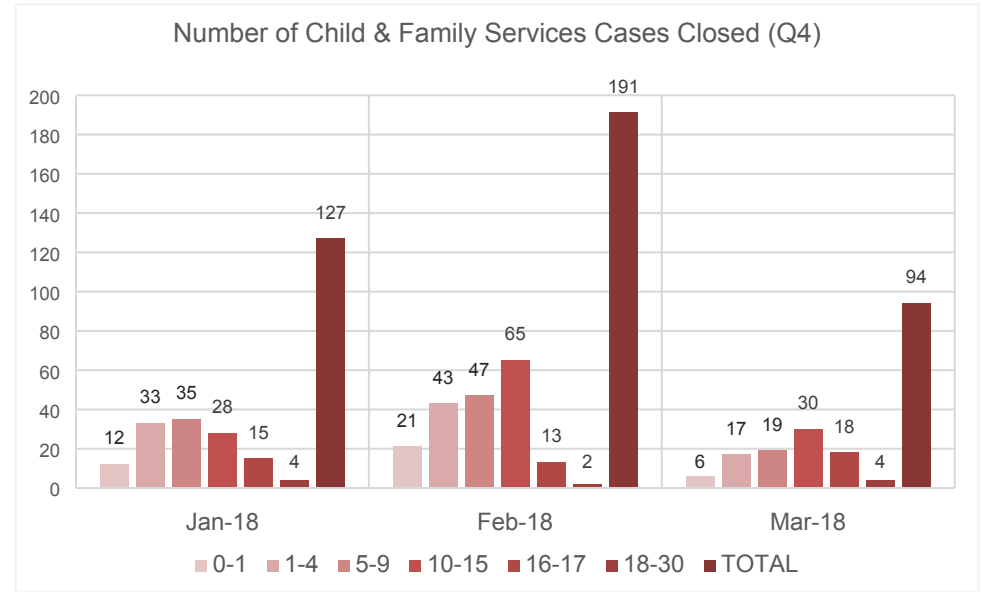
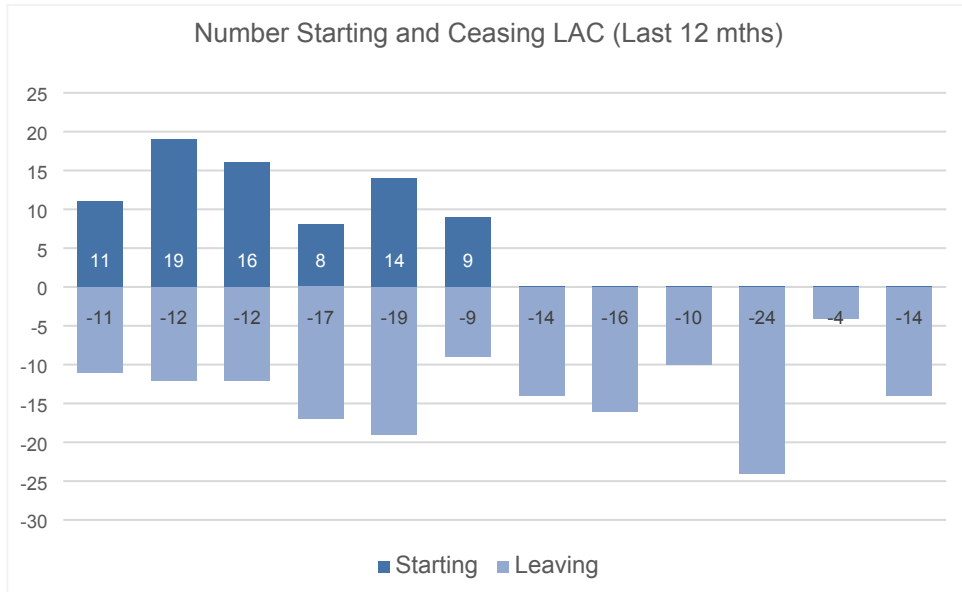


Statutory Services – Child & Family



Other comments

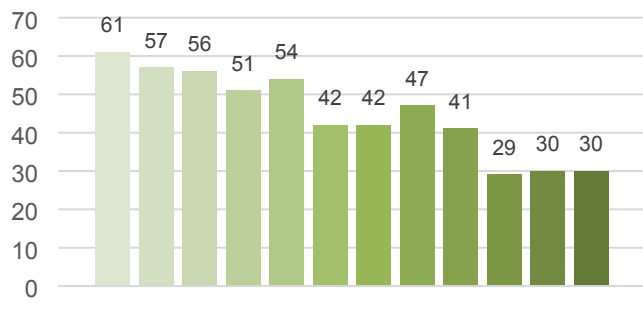
Statutory Services – Child & Family



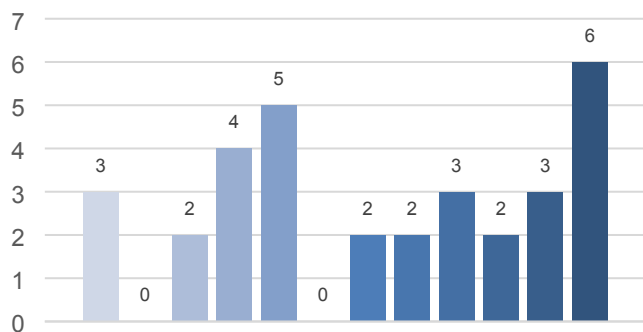
Other comments

Statutory Services – Youth Justice & Early Intervention (Post Court)

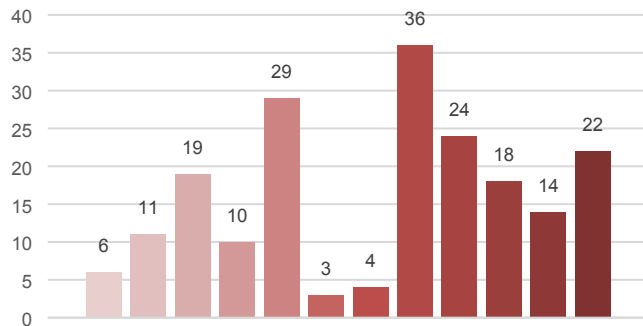
Number of Individuals Worked With (Last 12 mths)



First Time Entrants (Last 12 mths)



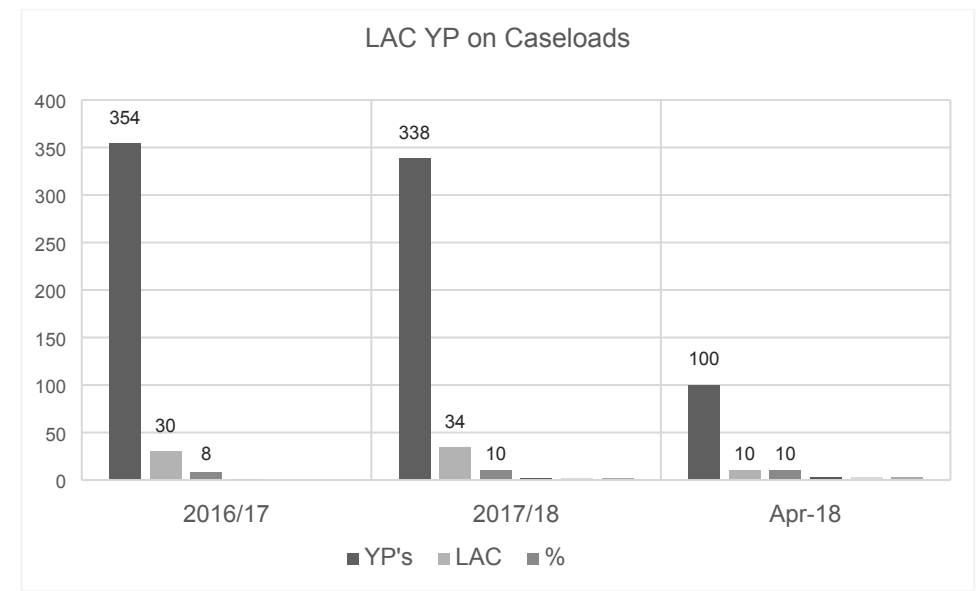
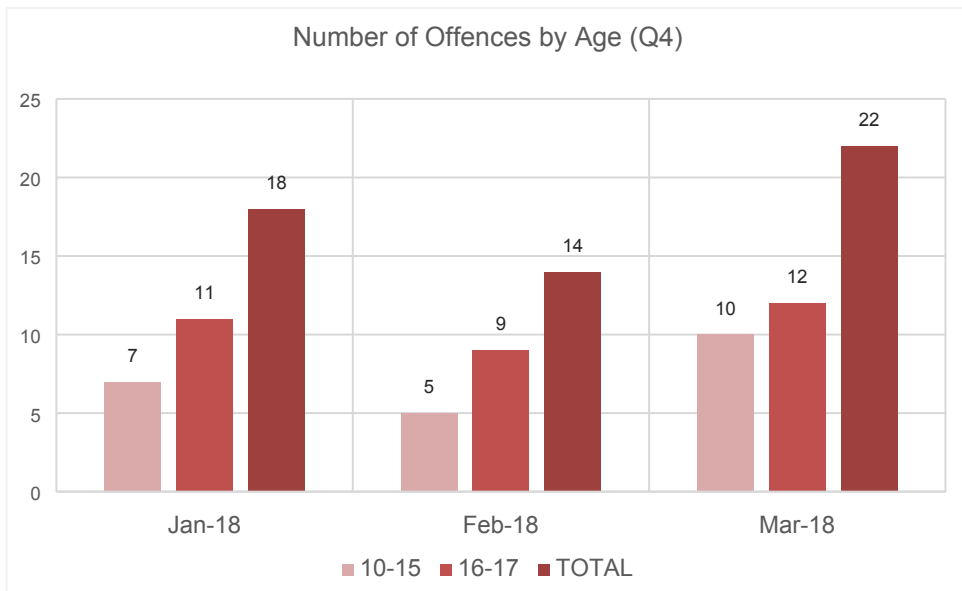
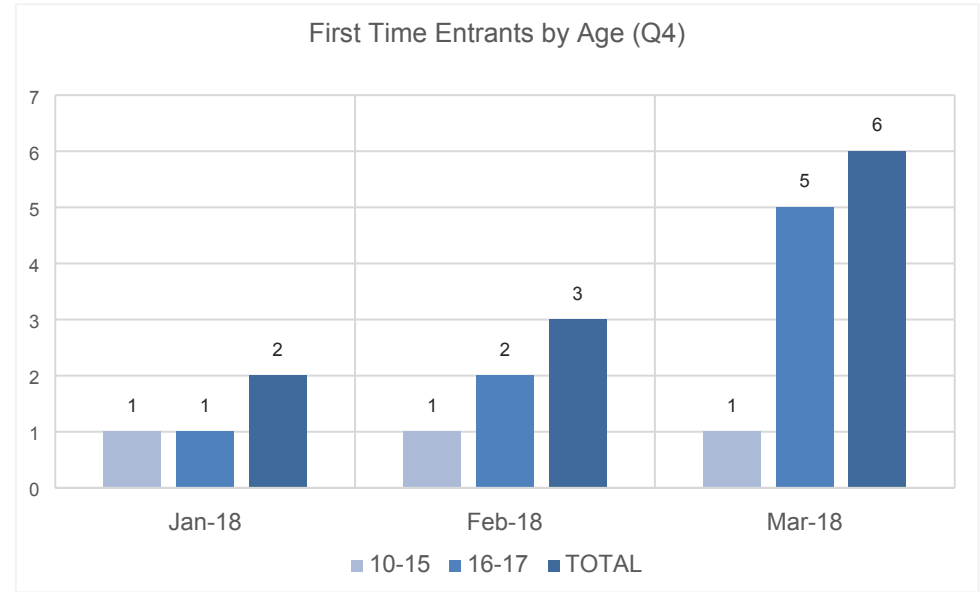
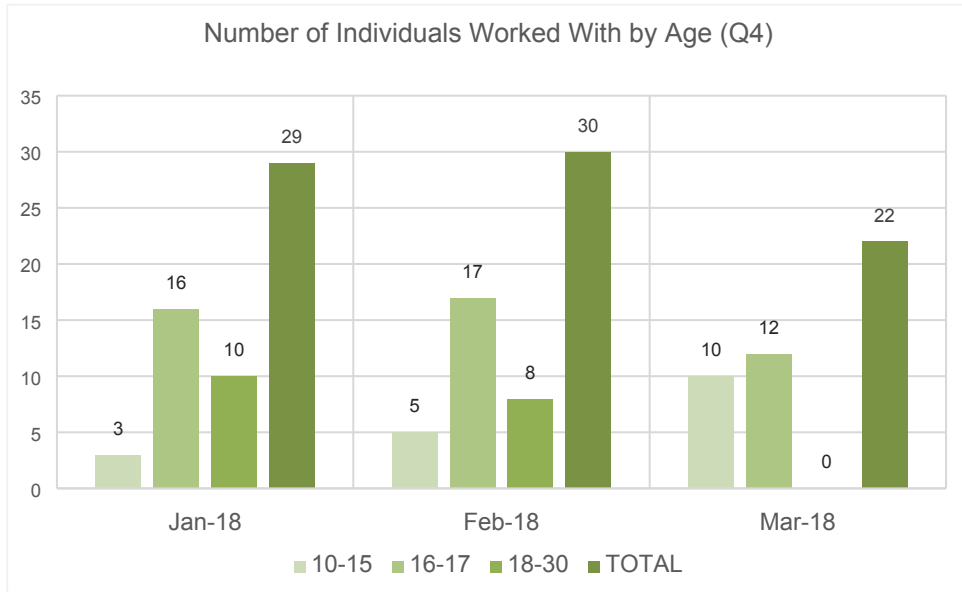
Number of Offences (Last 12 mths)



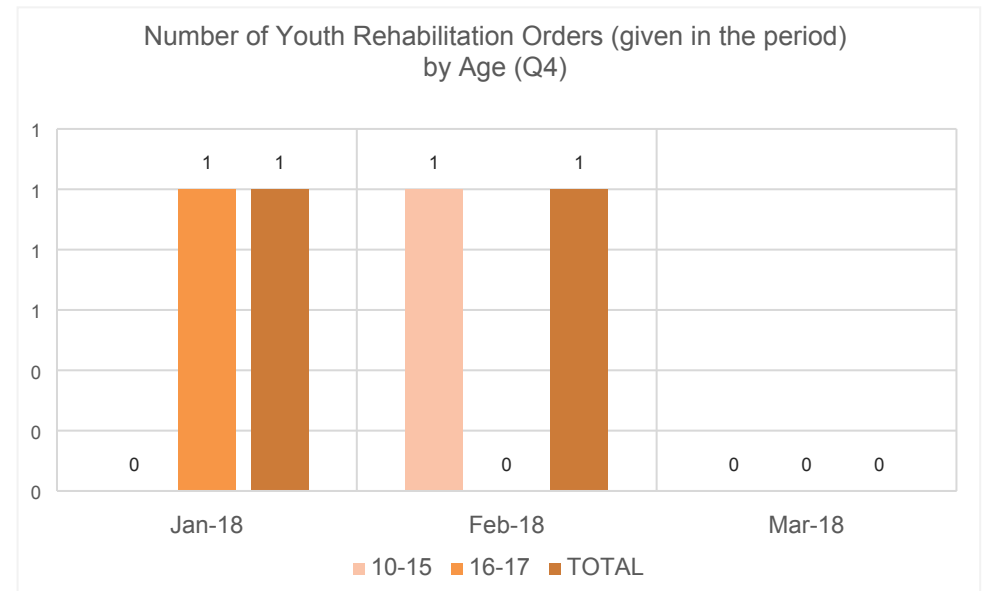
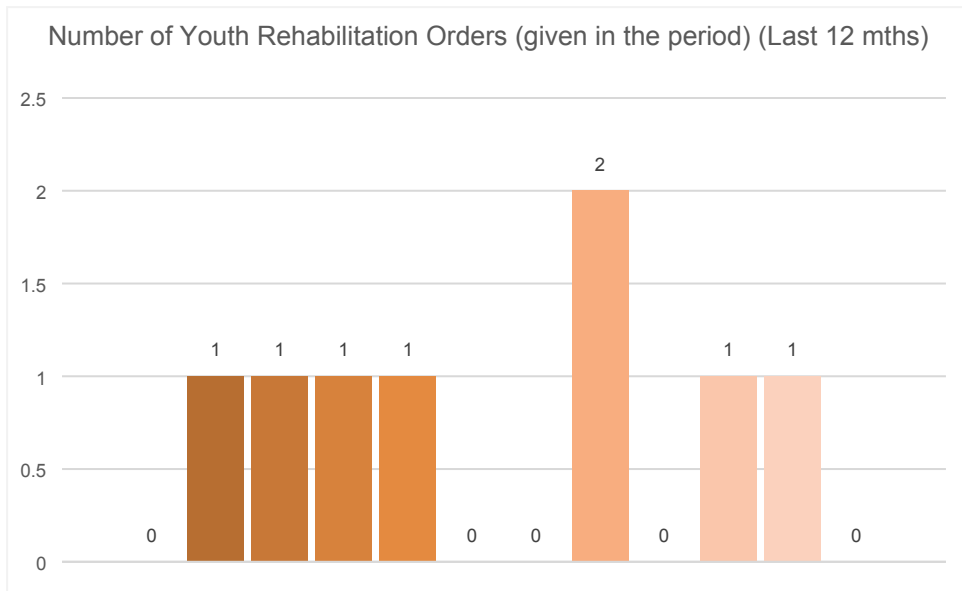
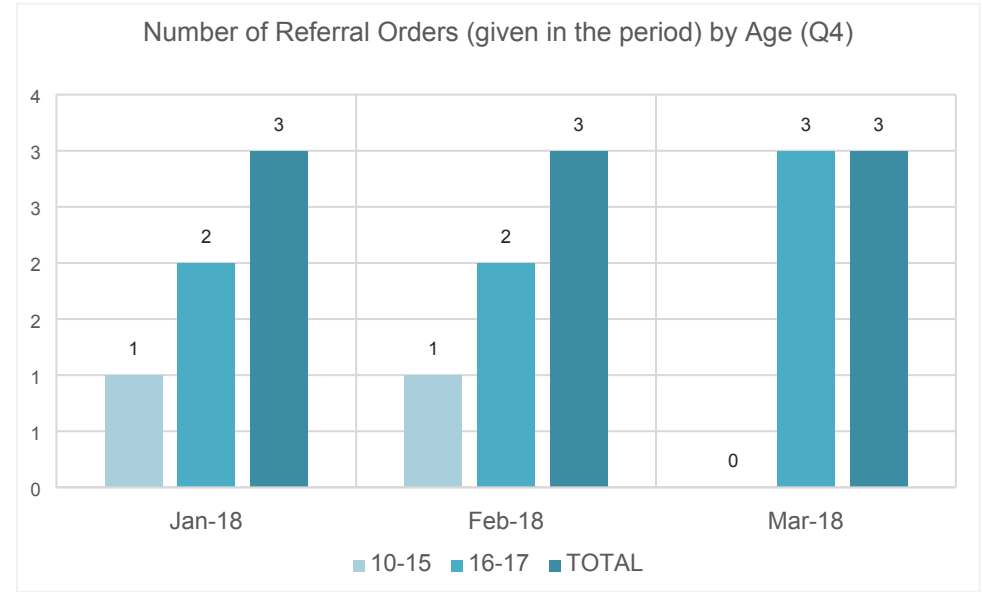
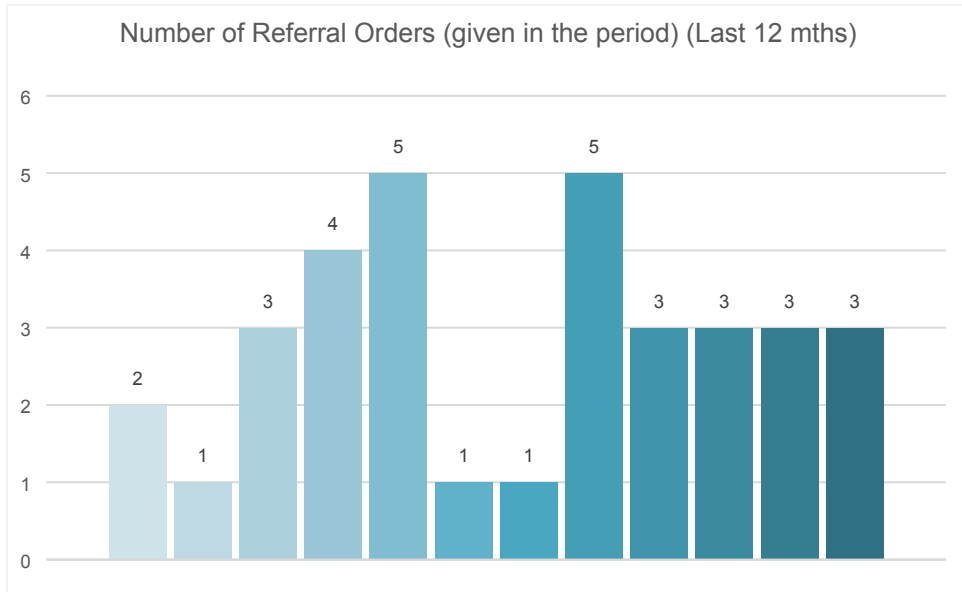
Quarterly Overview	Totals
Total number of individuals worked with	30
First Time Entrants	11
Number of Offences	54
Number of Referral Orders (given in the period)	9
Number of Youth Rehabilitation Orders (given in the period)	2
Number of Custodials (given in the period)	2

What's working well?	What are we worried about?	What do we need to do?

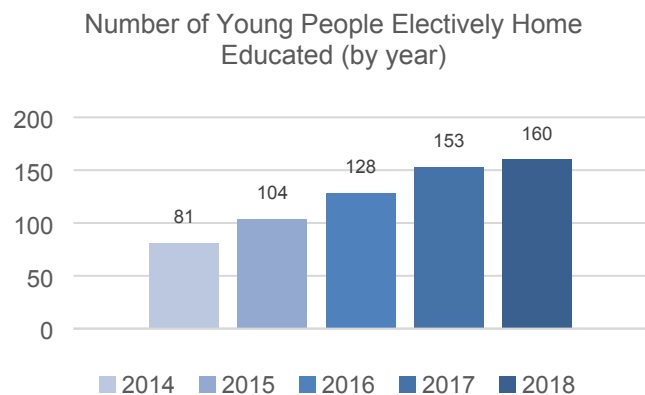
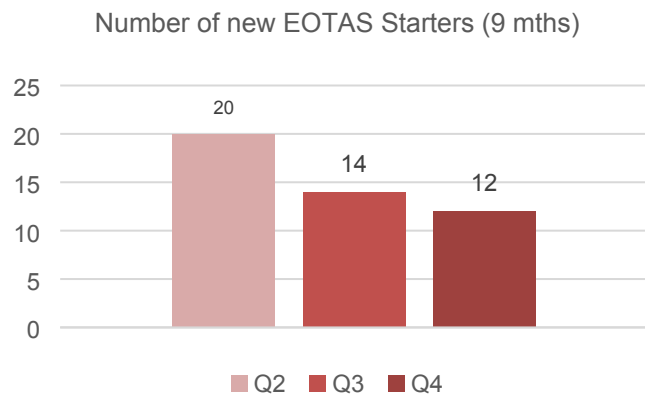
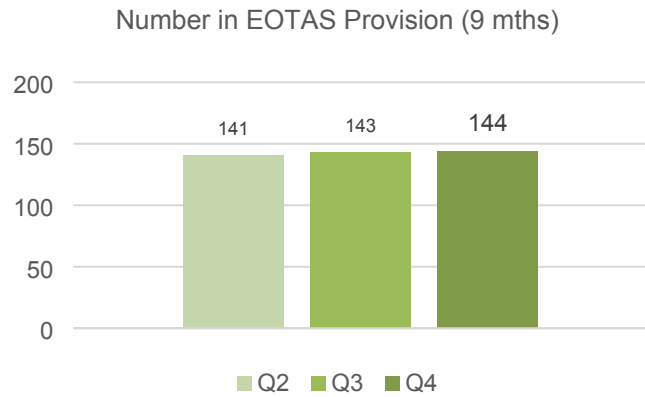
Statutory Services – Youth Justice & Early Intervention (Post Court)



Statutory Services – Youth Justice & Early Intervention (Post Court)



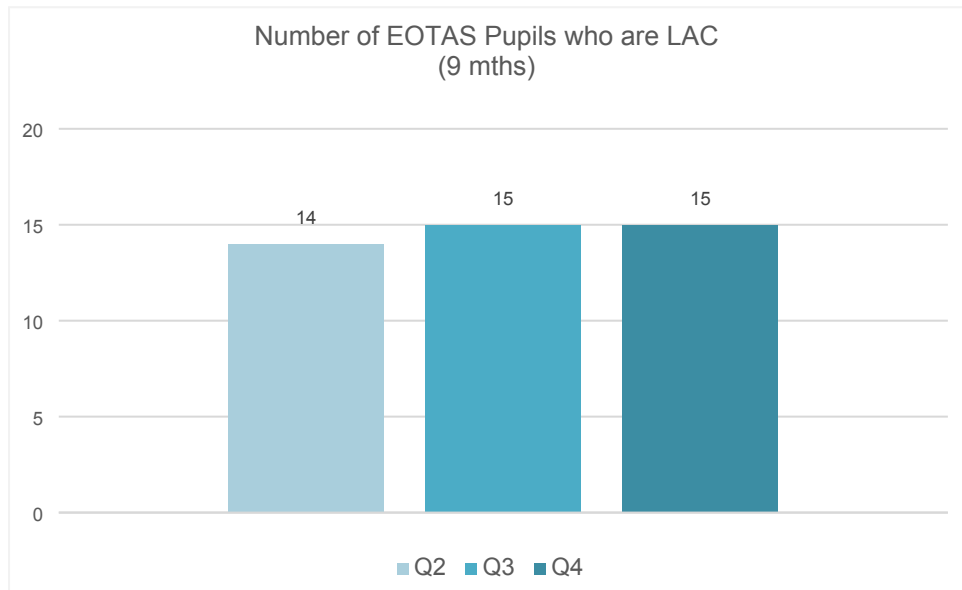
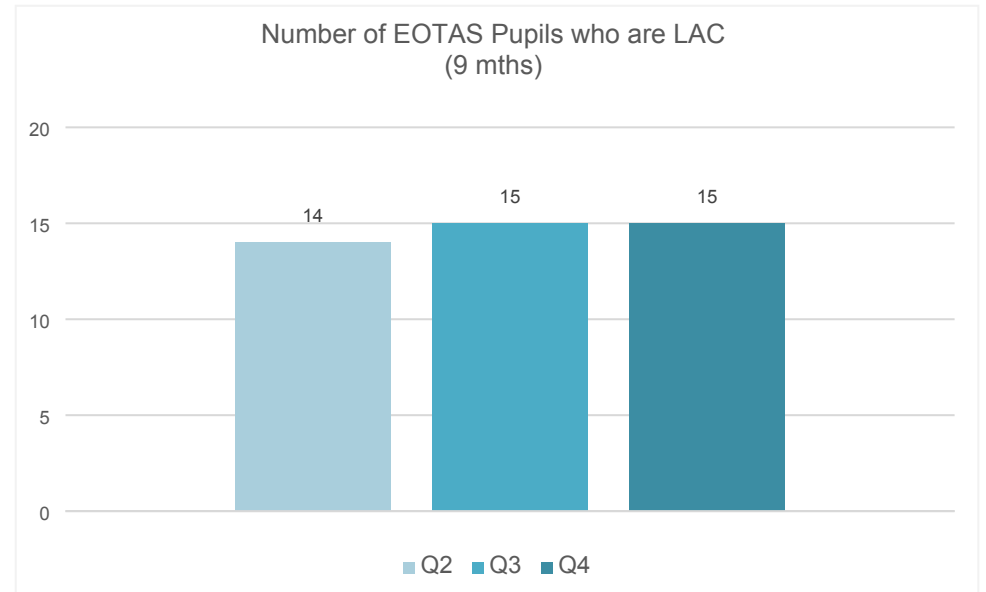
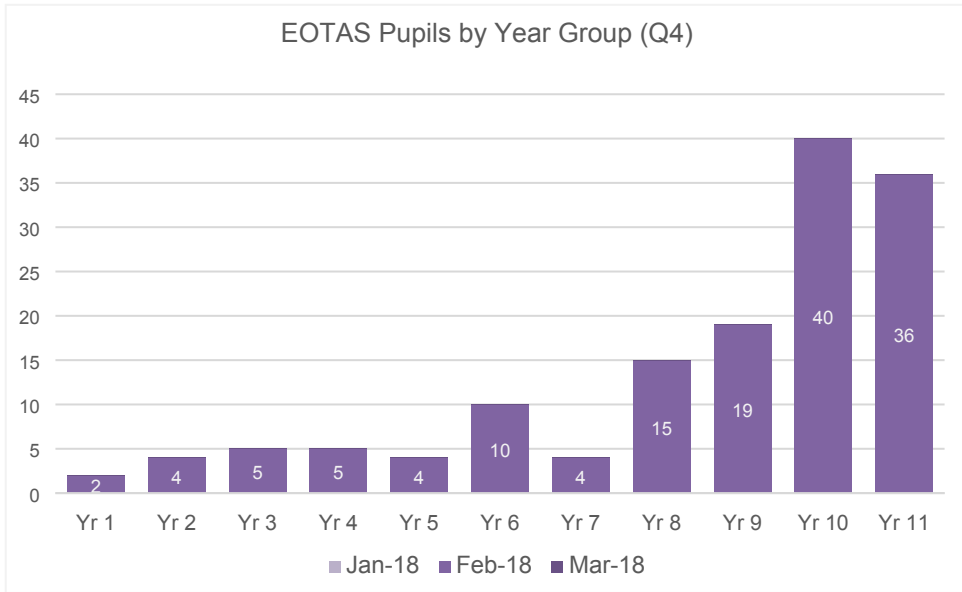
Statutory Services – Education – EOTAS Pupils



Quarterly Overview	Totals
Total number of pupils worked with	144
Total number in Arfryn Centre	
Total number in Step Ahead Centre	
Total number in Brondeg	
Total number on Pathways	
New EOTAS starters	12
Total number of EOTAS pupils who are LAC	15
Number of young people electively home educated	169

What's working well?	What are we worried about?	What do we need to do?
	<p>Numbers in provision are now being input on SIMS under one heading – City & County Swansea PRU</p> <p>Very hard for Mike to break down these figures now.</p>	

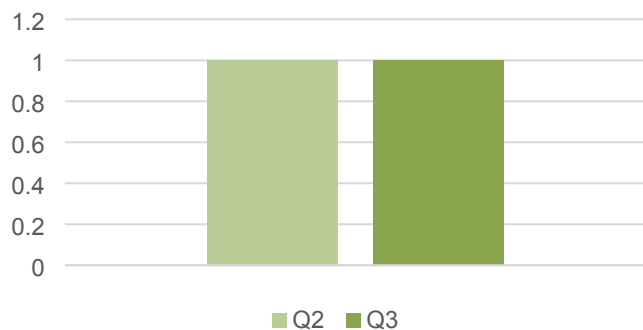
Statutory Services – Education – EOTAS Pupils



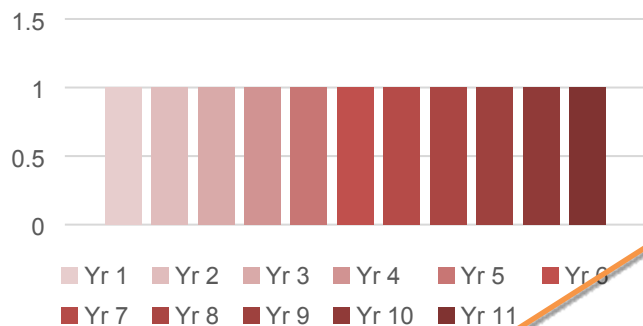
Other comments

Statutory Services – Education – EOTAS Panel

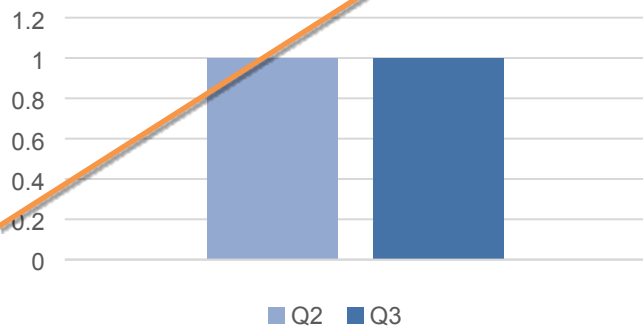
Number Referred to EOTAS Panel (6 mths)



Ages of Young People Referred (Q3)



Number of Referrals Agreed (6 mths)



Quarterly Overview	Totals
Total number of pupils referred to EOTAS Panel	
Total number of pupils referred – Primary age	
Total number of pupils referred – Secondary age	
Total number of referrals agreed	

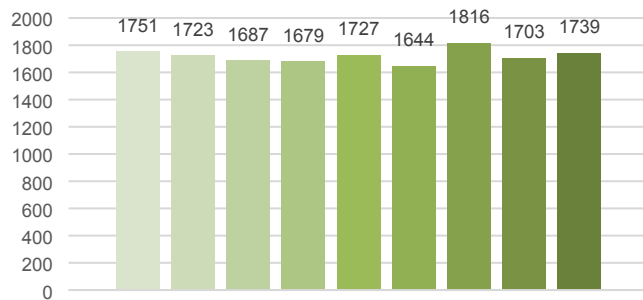
What's working well?	What are we worried about?	What do we need to do?

Section 2 – Early Help / Prevention

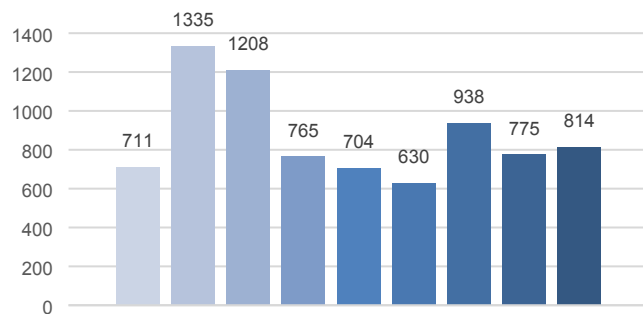


Headline Figures – Early Help / Prevention Overview

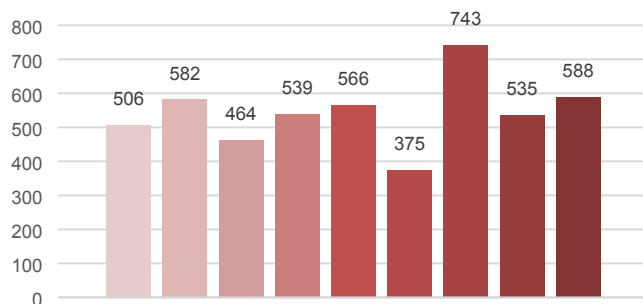
Total Number of Individuals Worked With (9 mths)



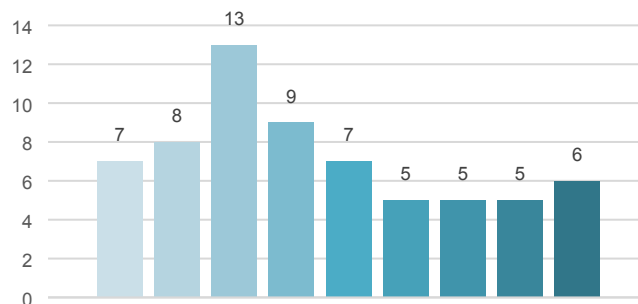
Total Number of Individuals on Caseloads (9 mths)



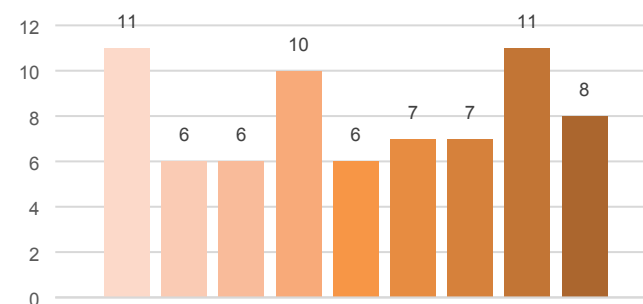
Total Number of Requests for Service (9 mths)



Total Number Stepping Up to Social Services (9 mths)



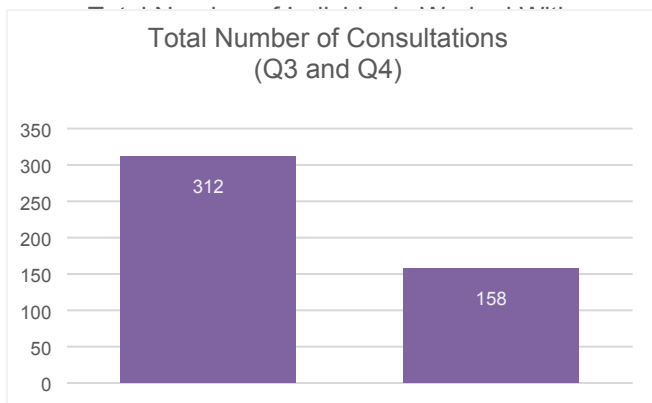
Total Number Stepping Down from Social Services (9 mths)



Quarterly Overview – All Prevention Services	Totals
Total number of individuals worked with	2654
Total number being case loaded	1431
Total number engaging in programme based activity	87
Total number stepping up to Social Services	16
Total number being stepped down from Social Services	26
Total number closed with positive change	348
Total number closed due to refused engagement / stopped engagement	158
Total number of consultations undertaken	158
Total number of requests for service (referrals)	1866

(The charts on this page include average figures for the month. They may also include duplicates. Figures do not include information on Other Families First Funded Projects, as those figures were provided for the whole year - not for the quarter)

Headline Figures – Prevention Services Consultation Overview

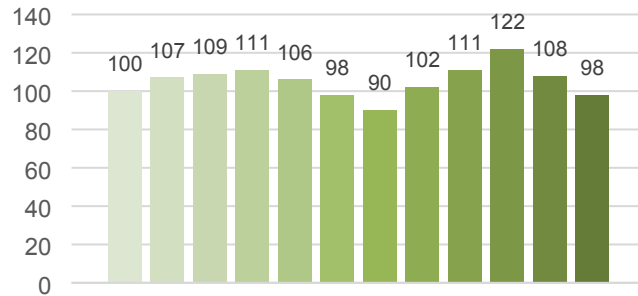


Quarterly Overview	Totals
Total number of consultations	158
Total number of consultations undertaken by YPS	158
Total number of consultations undertaken by TAF	0
Total number of consultations undertaken by FPT	0
Total number of consultations undertaken by FWT	0
Total number of consultations undertaken by JIGSO	0

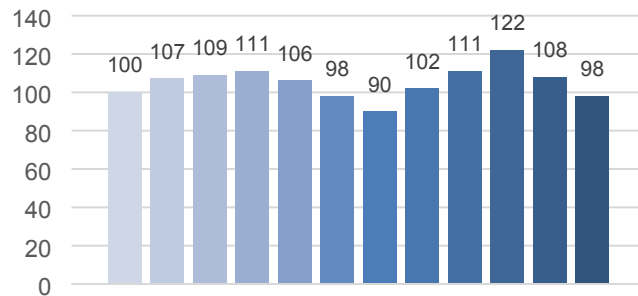
(The charts on this page include average figures for the month. They may also include duplicates.)

Early Help / Prevention – Youth Justice & Early Intervention (Pre Court)

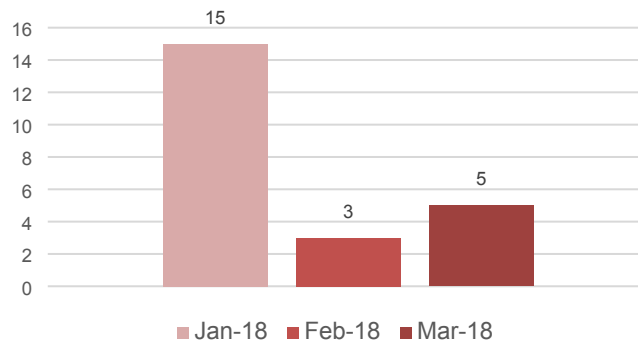
Number of Individuals Worked With (Last 12 mths)



Number of Individuals on Caseloads (Last 12 mths)



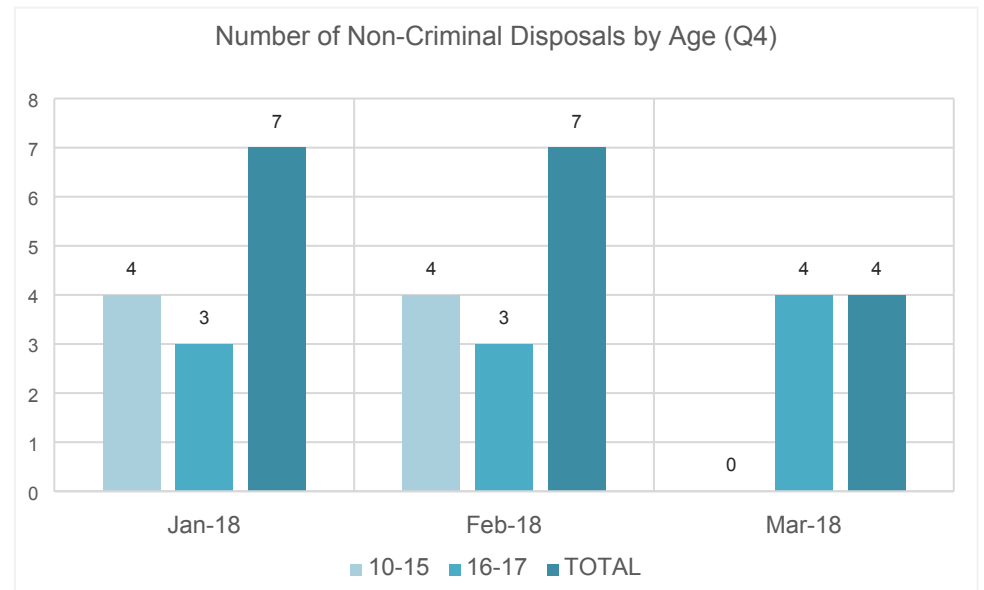
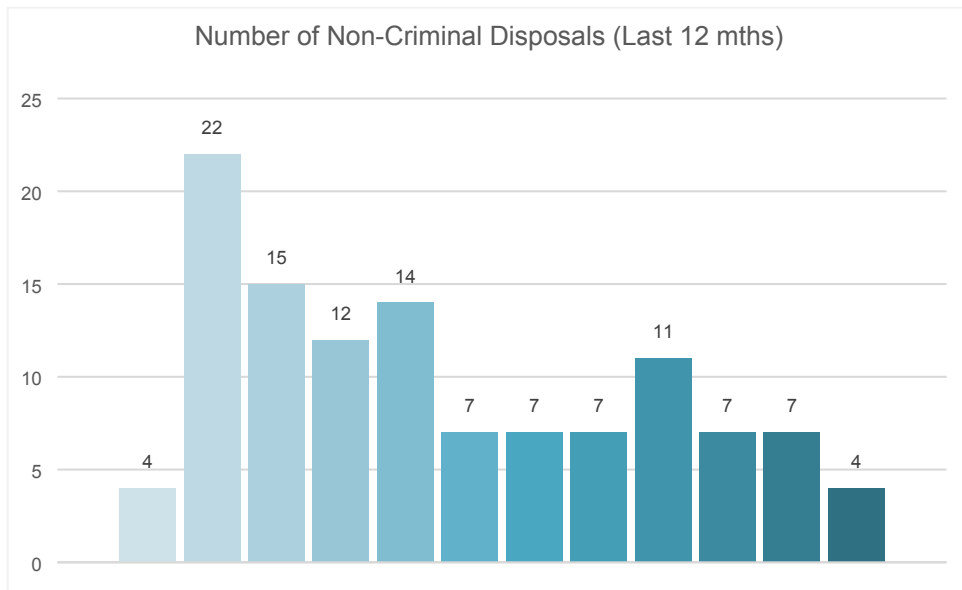
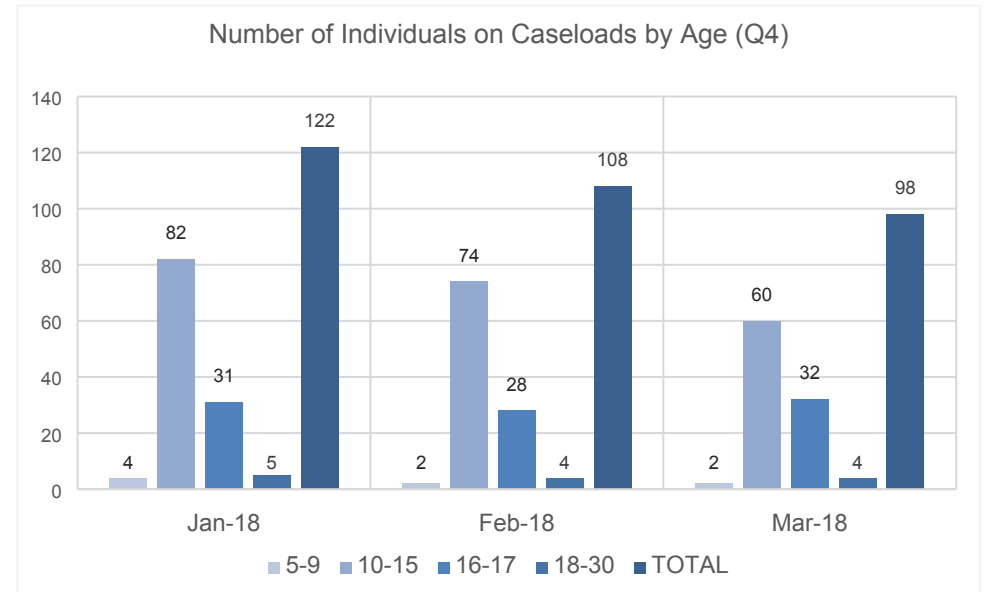
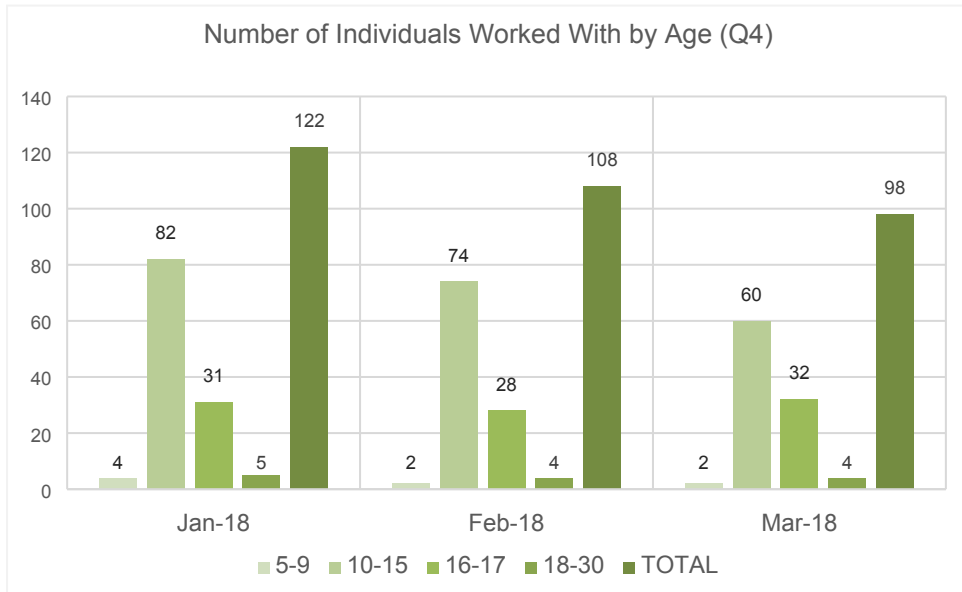
Requests for Service Received (Q4)



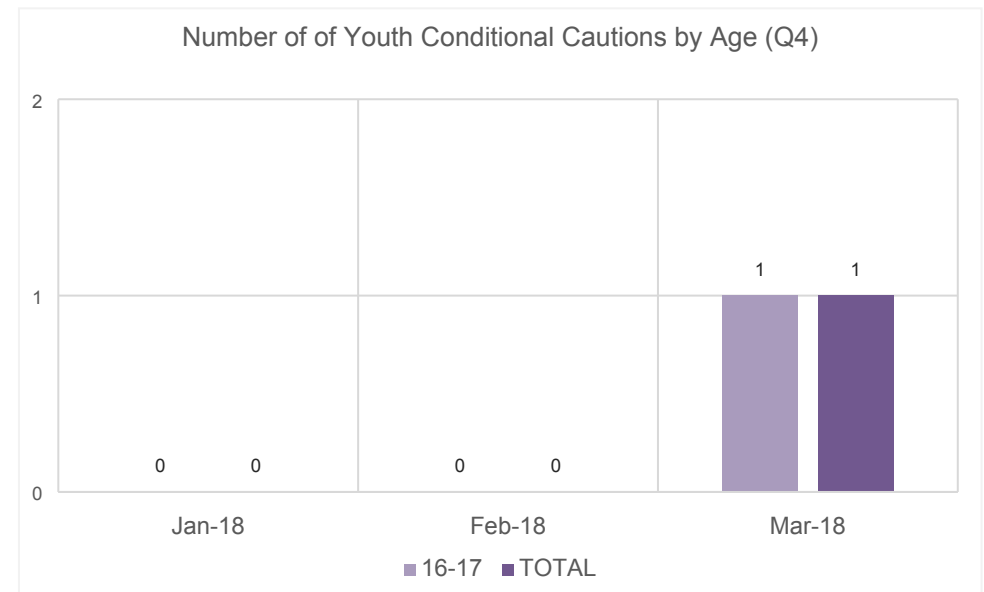
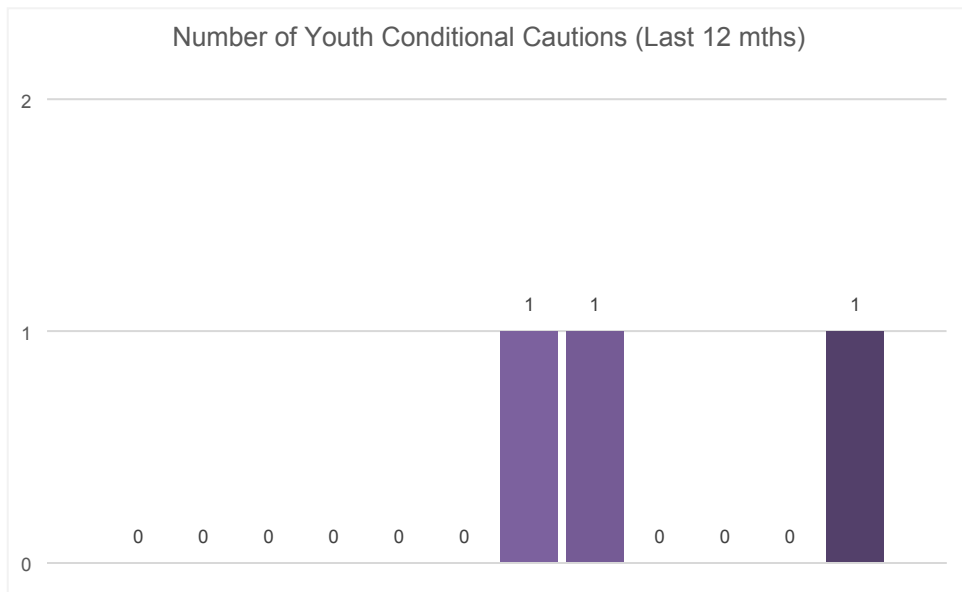
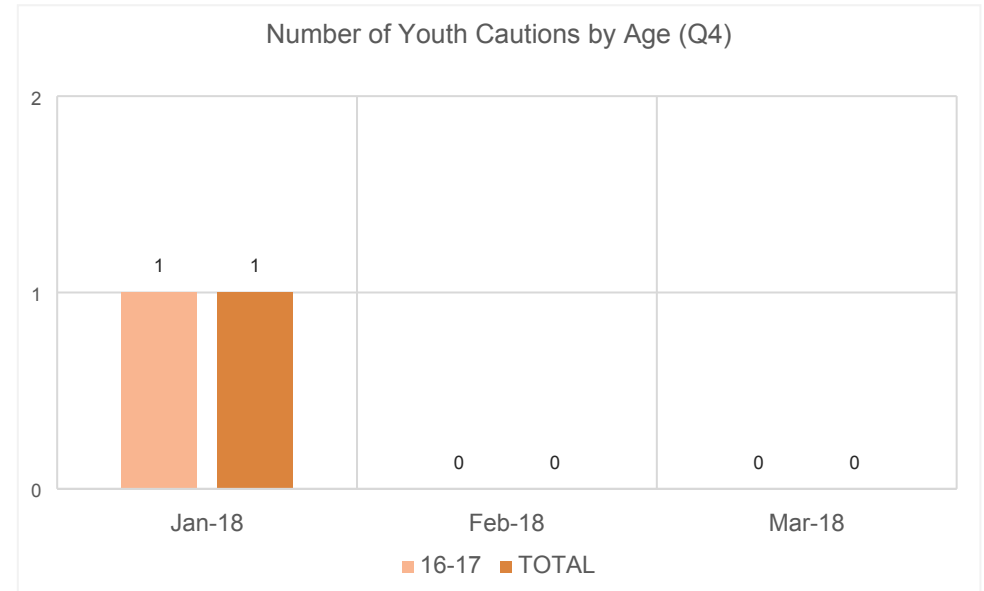
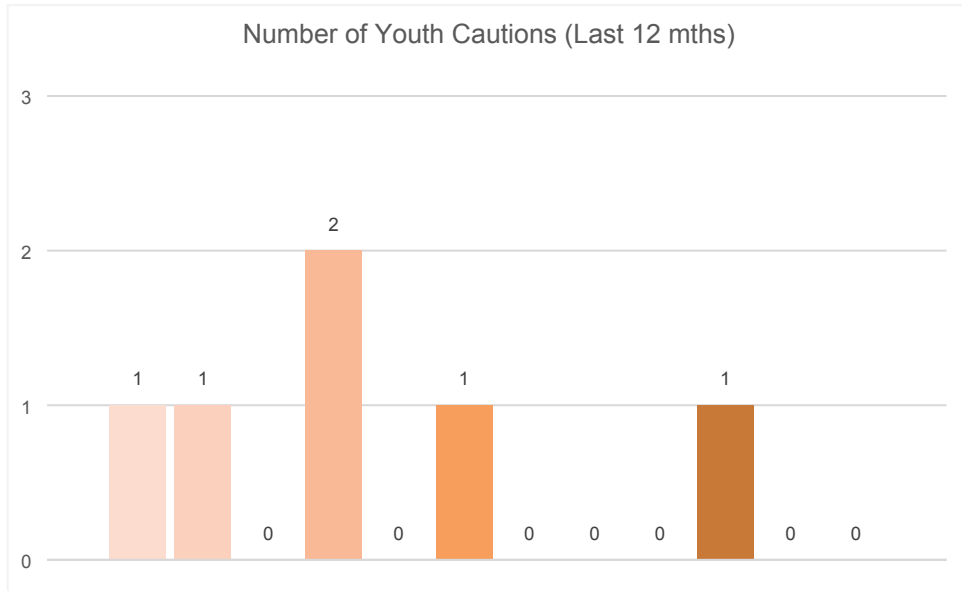
Quarterly Overview	Totals
Total number of individuals worked with	122
Total number being case loaded	122
Total number engaging in programme based activity	N/A
Total number stepping up to Social Services	N/A
Total number being stepped down from Social Services	N/A
Total number closed with positive change	N/A
Total number closed with no engagement	N/A
Total number of consultations undertaken	N/A
Total number of requests for service	23
Non-Criminal Disposals (Youth Restorative Disposals)	18
Youth Cautions	1
Youth Conditional Cautions	1

What's working well?	What are we worried about?	What do we need to do?

Early Help / Prevention – Youth Justice & Early Intervention (Pre Court)

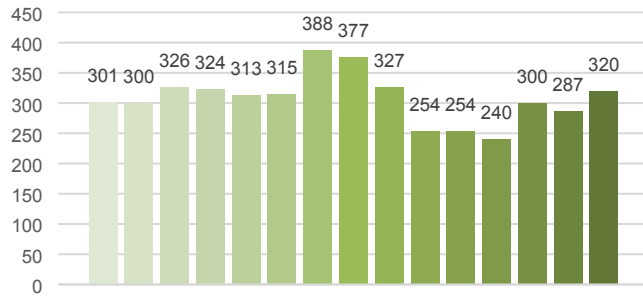


Early Help / Prevention – Youth Justice & Early Intervention (Pre Court)

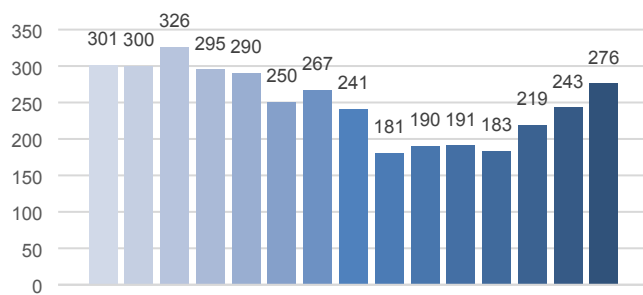


Early Help / Prevention – Young People Services – Pre 16

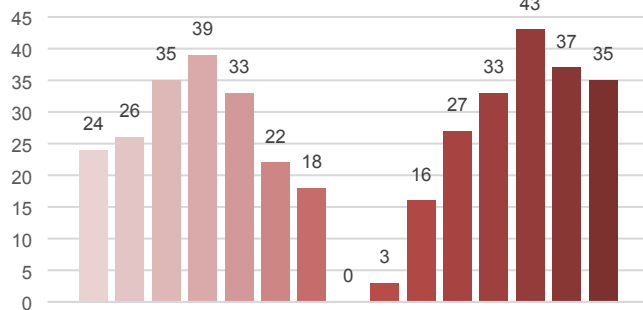
Number of Individuals Worked With
(Last 12 mths)



No of Individuals on Caseloads
(Last 12 mths)



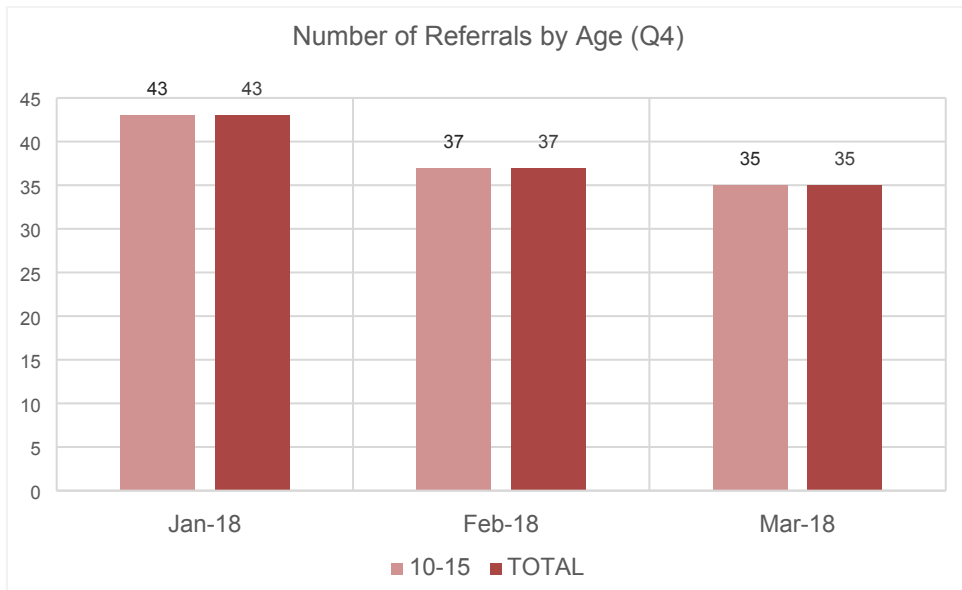
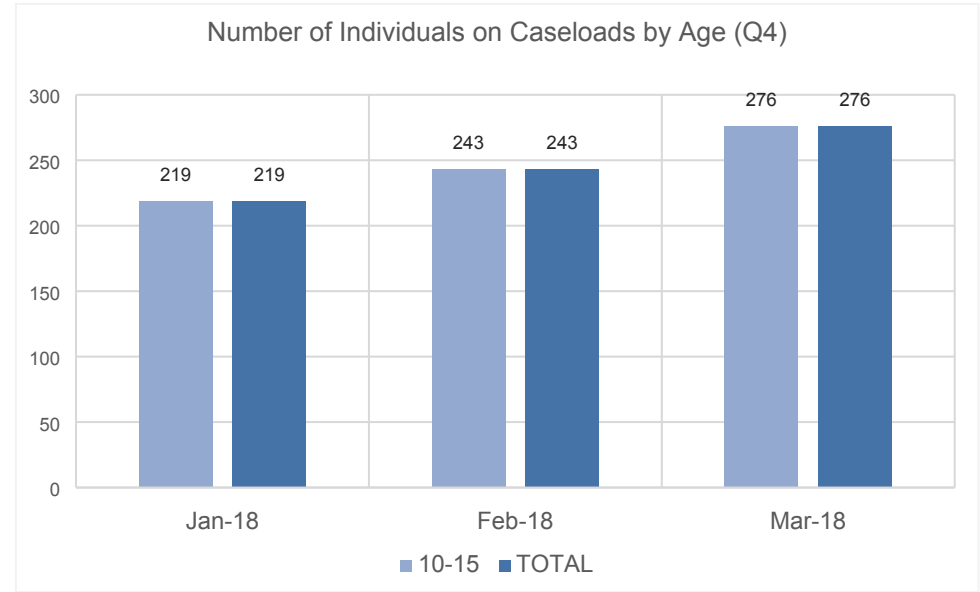
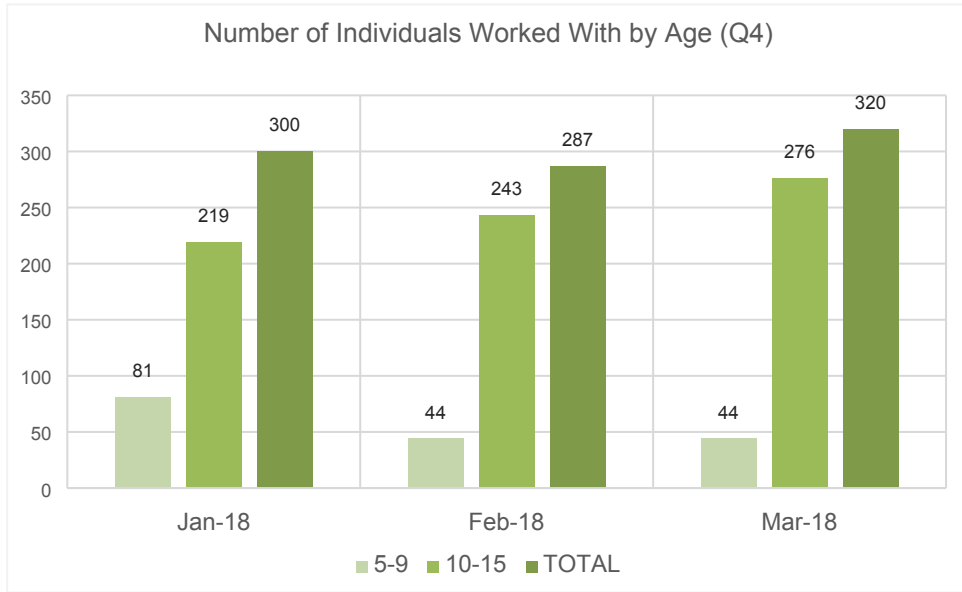
Referrals Received (Last 12 mths)



Quarterly Overview	Totals
Total number of individuals worked with	366
Total number being case loaded	320
Total number stepped up to Social Services	3
Total number stepped down from Social Services	14
Total number closed with positive change	10
Total number closed with no engagement	8
Total number of consultations undertaken	158
Total number of requests for service (referrals)	115

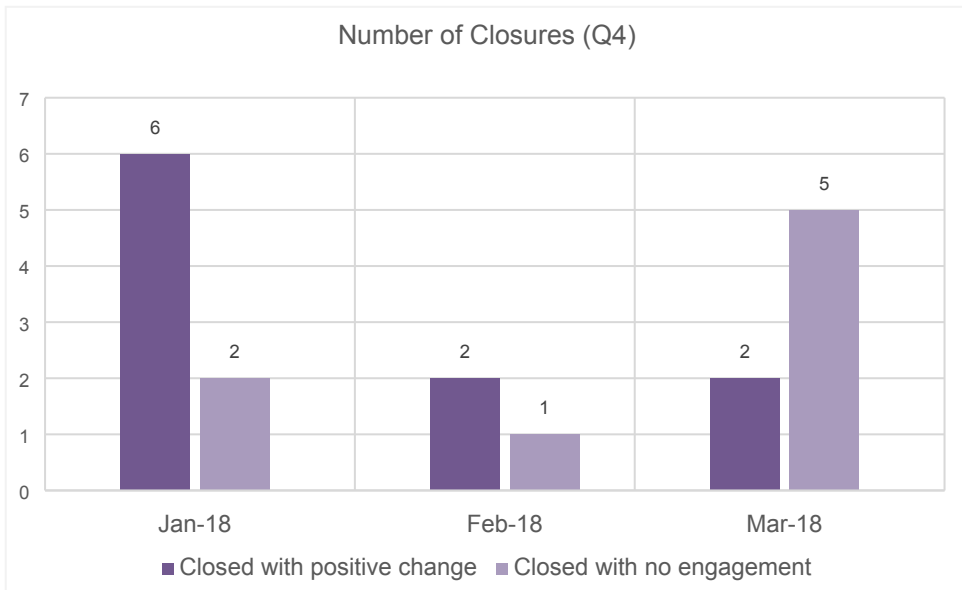
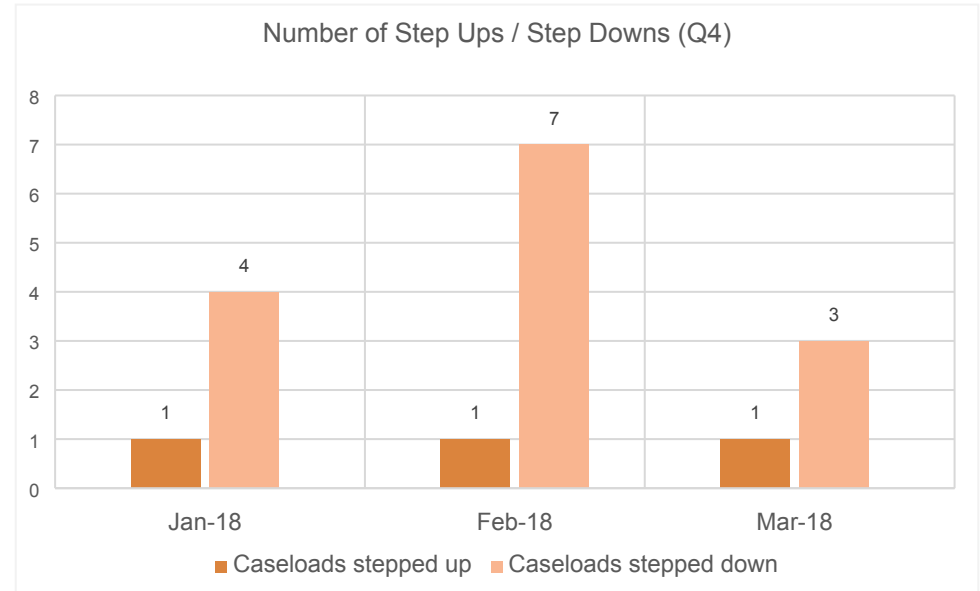
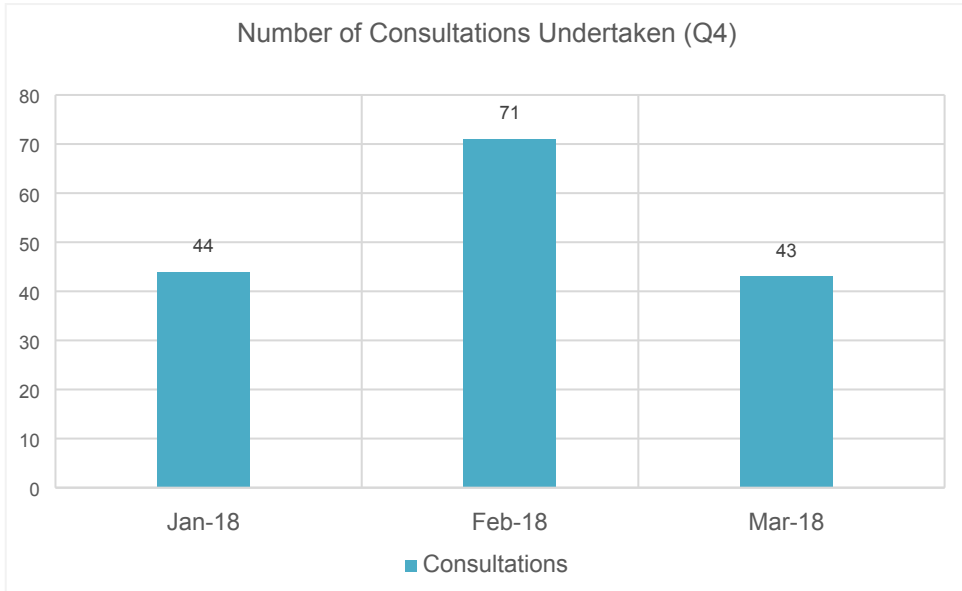
What's working well?	What are we worried about?	What do we need to do?

Early Help / Prevention – Young People Services – Pre 16



Other comments

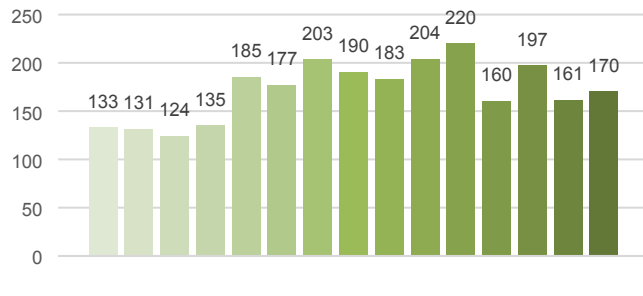
Early Help / Prevention – Young People Services – Pre 16



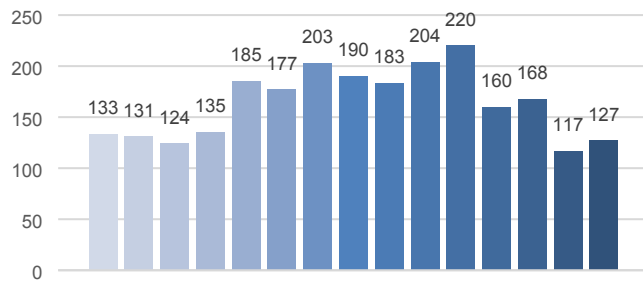
Other comments

Early Help / Prevention – Young People Services – Post 16

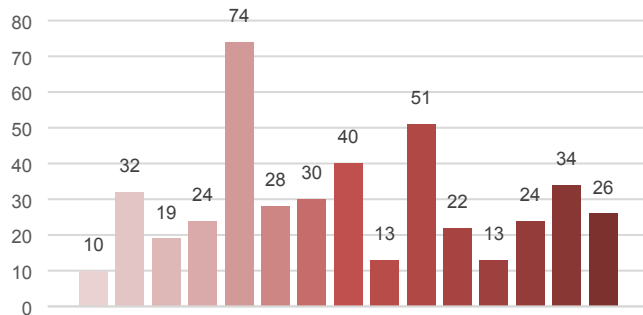
Number of Individuals Worked With (Last 12 mths)



No of Individuals on Caseloads (Last 12 mths)



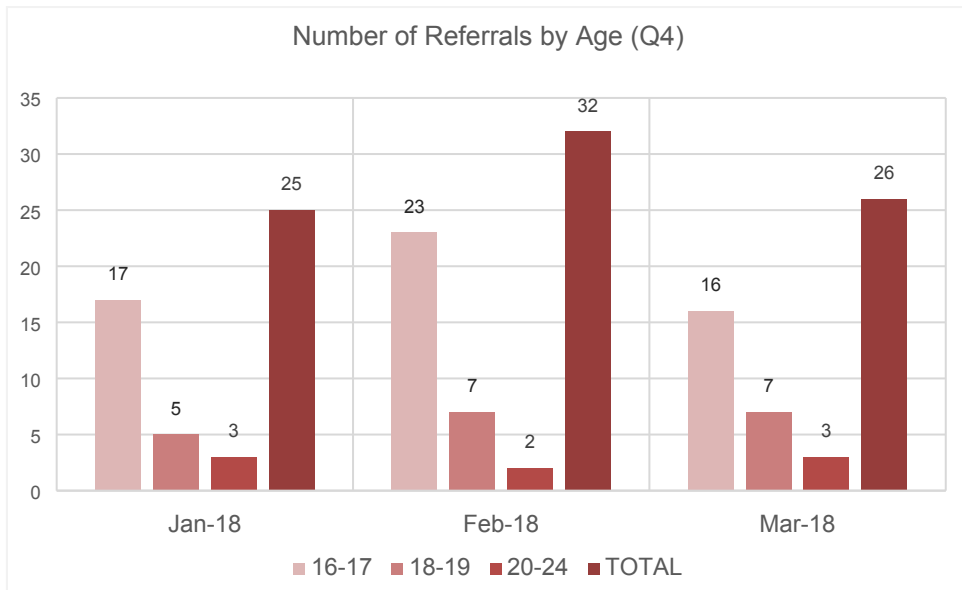
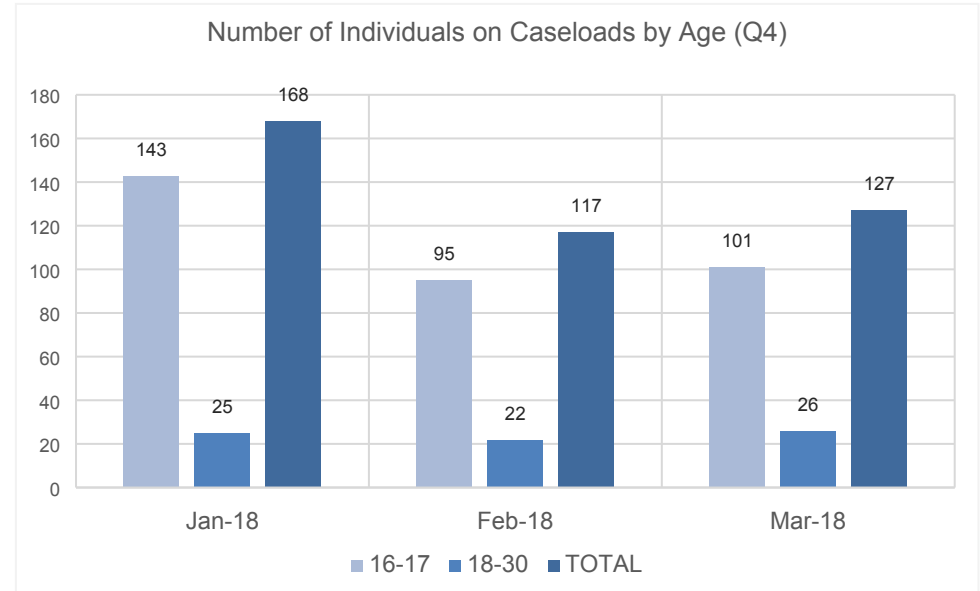
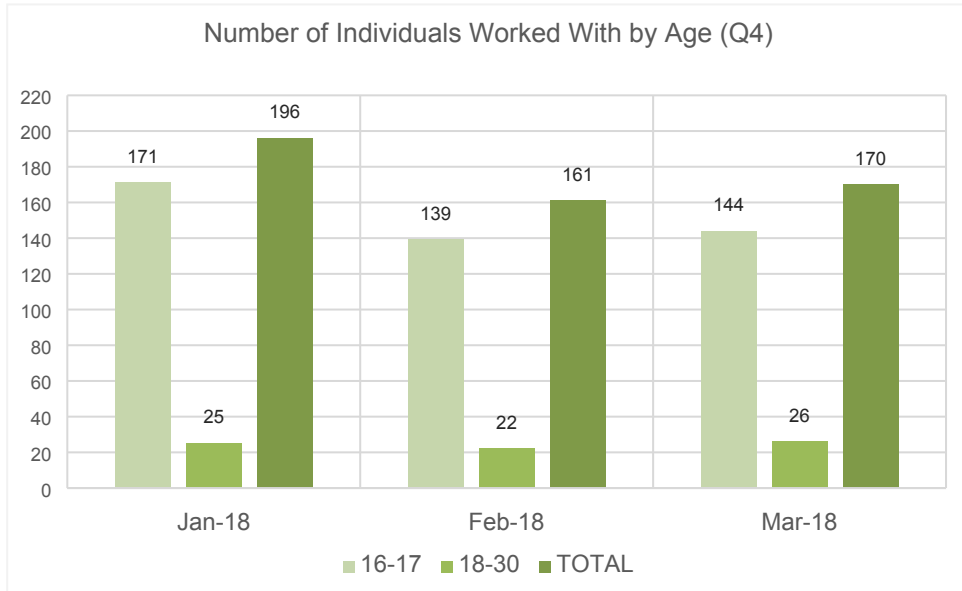
Referrals Received (Last 12 mths)



Quarterly Overview	Totals
Total number of individuals worked with	222
Total number being case loaded	171
Total number engaging in programme based activity	
Total number stepping up to Social Services	n/a
Total number being stepped down from Social Services	n/a
Total number closed with positive change	32
Total number closed with no engagement	12
Total number of consultations undertaken	0
Total number of requests for service (referrals)	84

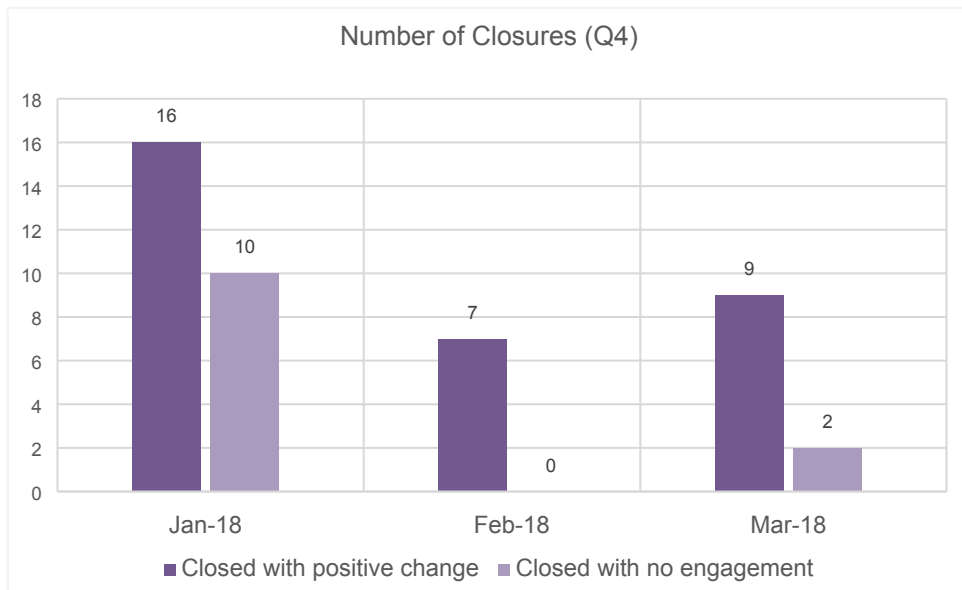
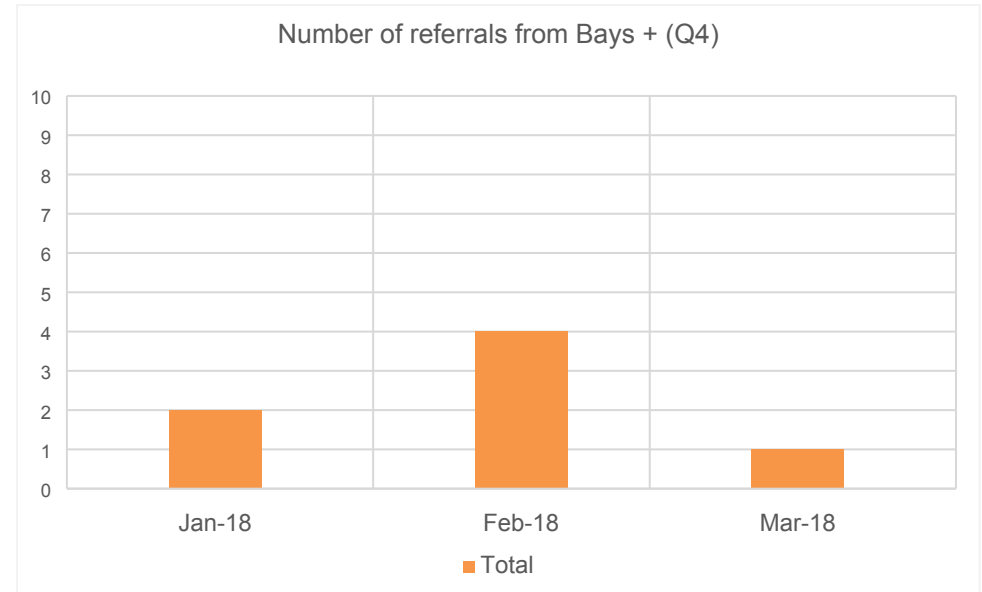
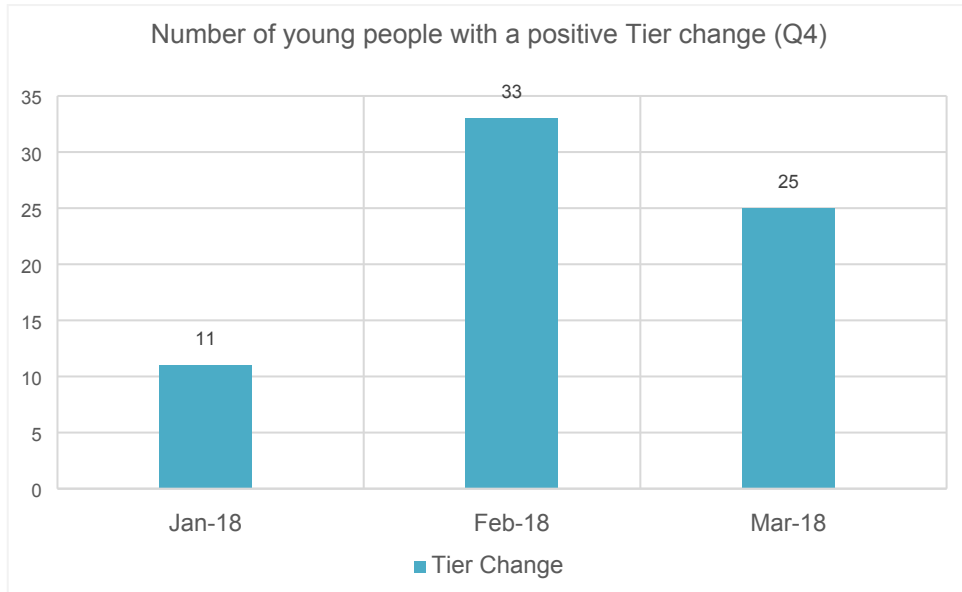
What's working well?	What are we worried about?	What do we need to do?

Early Help / Prevention – Young People Services – Post 16



Other comments

Early Help / Prevention – Young People Services – Post 16

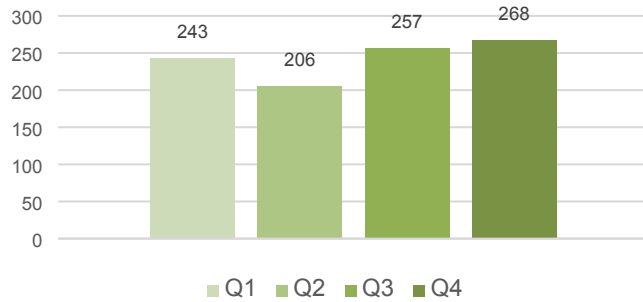


Other comments

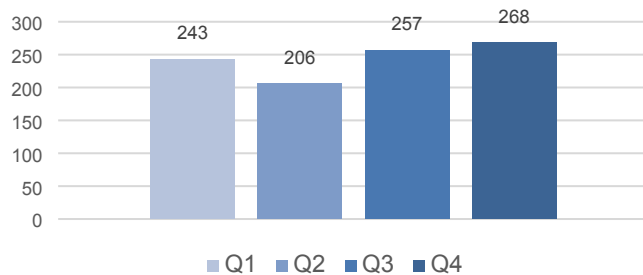
Please note the Post 16 team co-work a variety of their cases with Social Services/ Bays+ therefore there is no current process for step ups/ step downs.

Early Help / Prevention – Early Intervention Service – Team Around the Family (TAF)

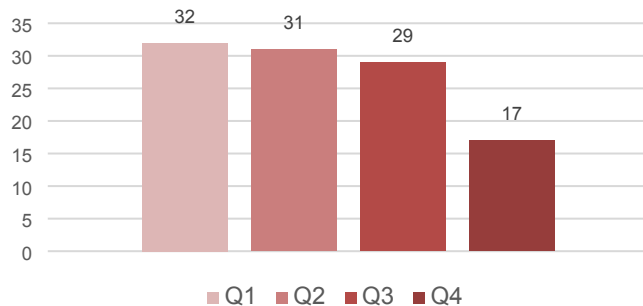
No. of Individuals Worked With (Last 12 mths)



No of Individuals on Caseloads (Last 12 mths)



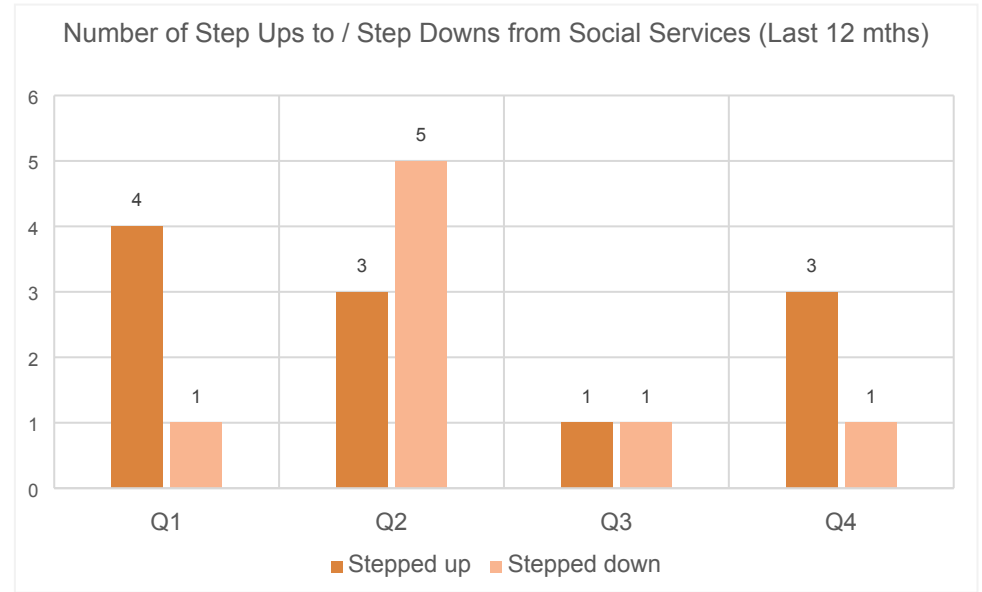
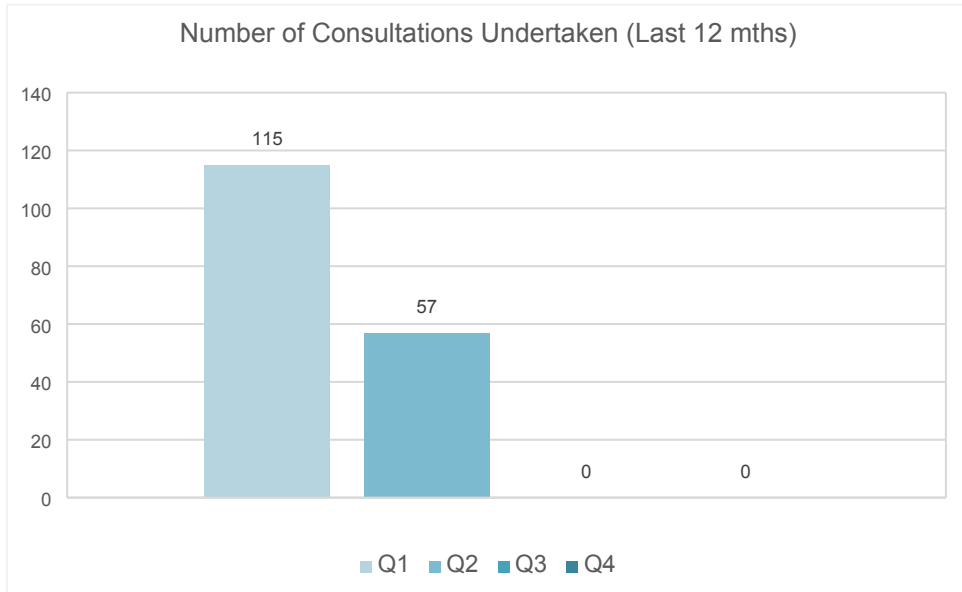
Requests for Service Received (Last 12 mths)



Quarterly Overview	Totals
Total number of individuals worked with	268
Total number being case loaded	268
Total number stepping up to Social Services	3
Total number being stepped down from Social Services	1
Total number closed with positive change	7
Total number closed with no engagement	1
Total number of consultations undertaken	
Total number of requests for service	17

What's working well?	What are we worried about?	What do we need to do?

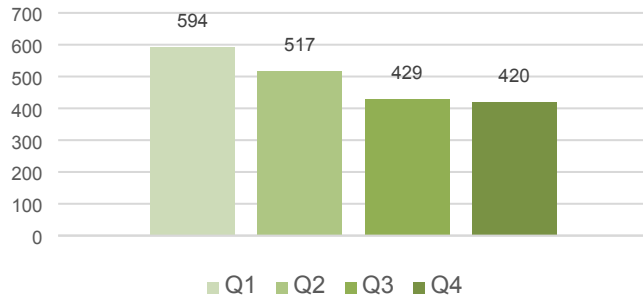
Early Help / Prevention – Early Intervention Service – Team Around the Family (TAF)



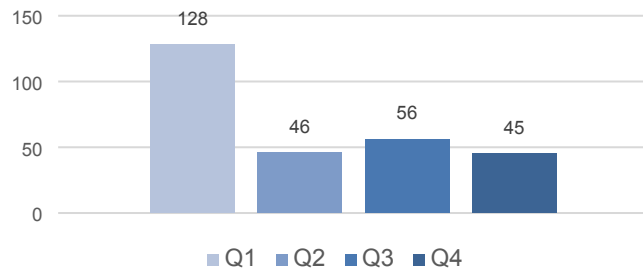
Other comments

Early Help / Prevention – Early Intervention Service – Family Partnership Team

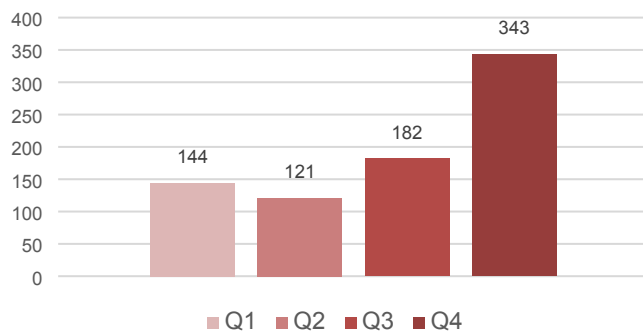
No. of Individuals Worked With (Last 12 mths)



No of Individuals on Caseloads (Last 12 mths)



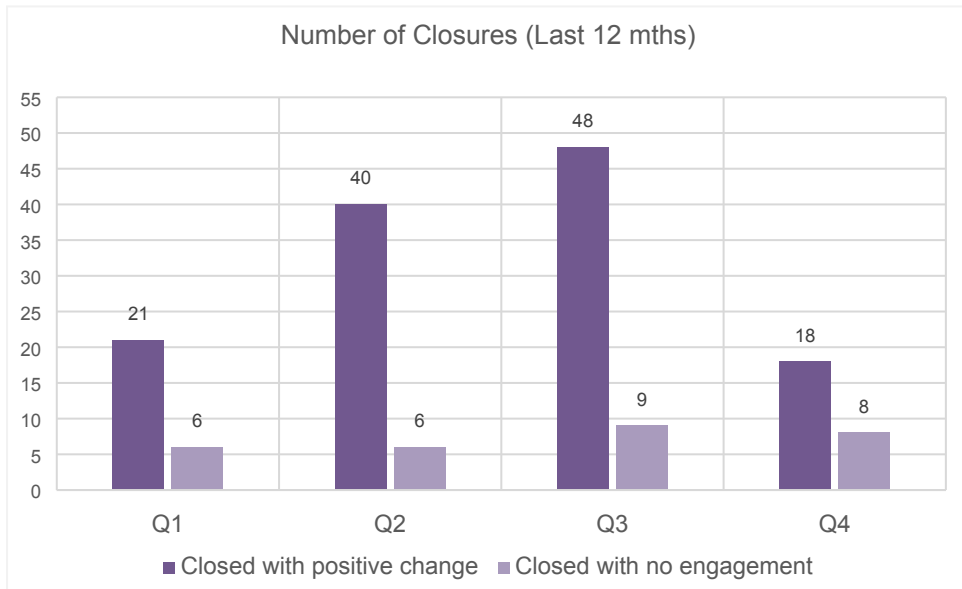
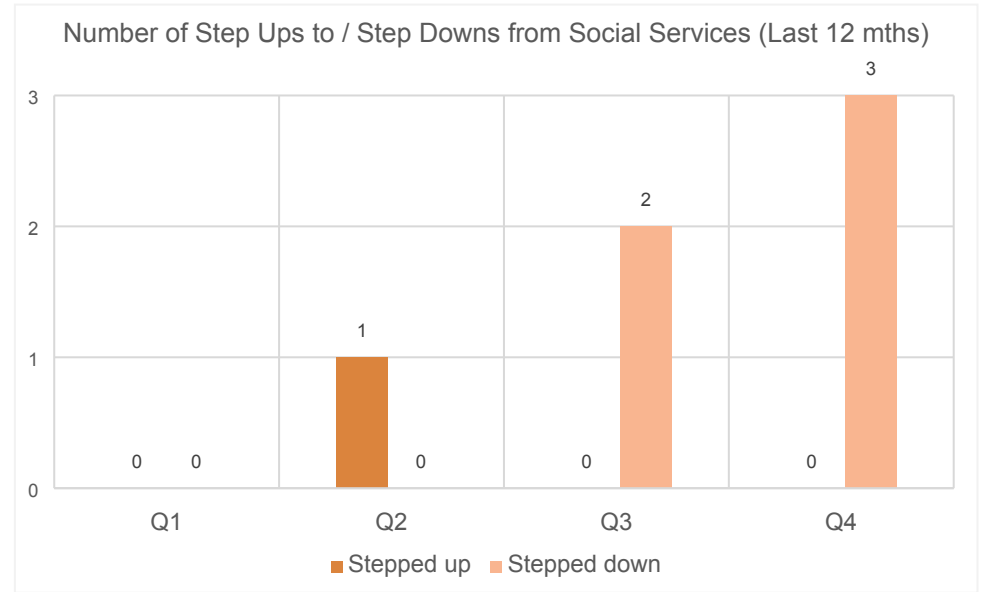
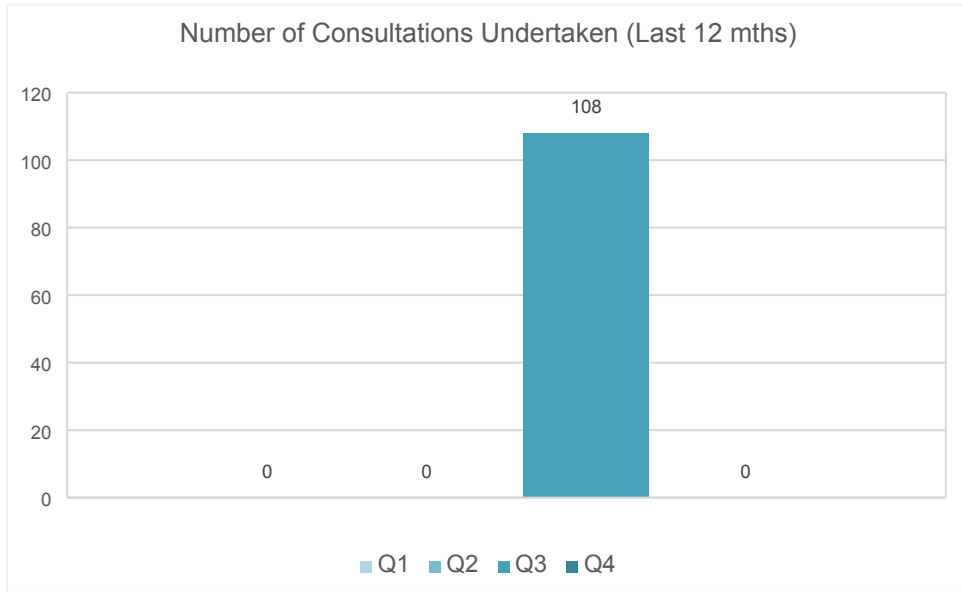
Referrals Received (Last 12 mths)



Quarterly Overview	Totals
Total number of individuals worked with	420
Total number being case loaded	45
Total number engaging in programme based activity	69
Total number stepping up to Social Services	0
Total number being stepped down from Social Services	3
Total number closed with positive change	18
Total number closed with no engagement	8
Total number of consultations undertaken	
Total number of requests for service	343

What's working well?	What are we worried about?	What do we need to do?

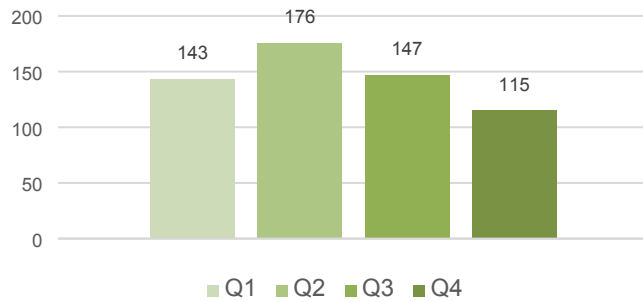
Early Help / Prevention – Early Intervention Service – Family Partnership Team



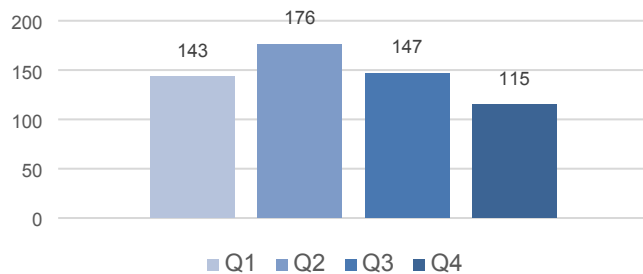
Other comments

Early Help / Prevention – Early Intervention Service – Family Wellbeing Team

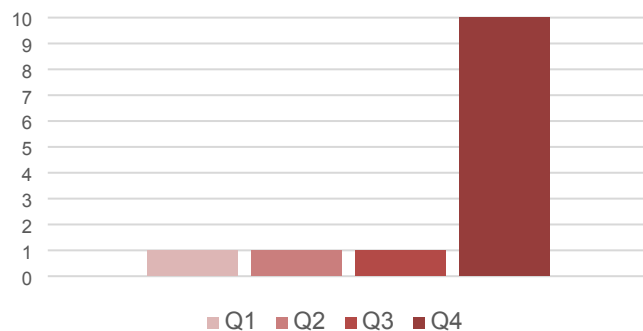
No. of Individuals Worked With (Last 12 mths)



No of Individuals on Caseloads (Last 12 mths)



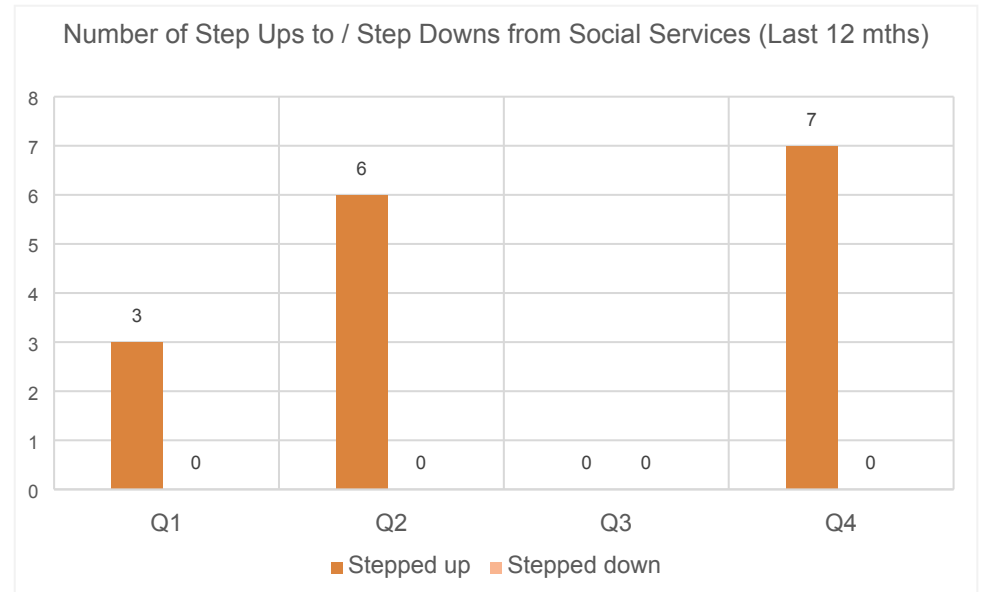
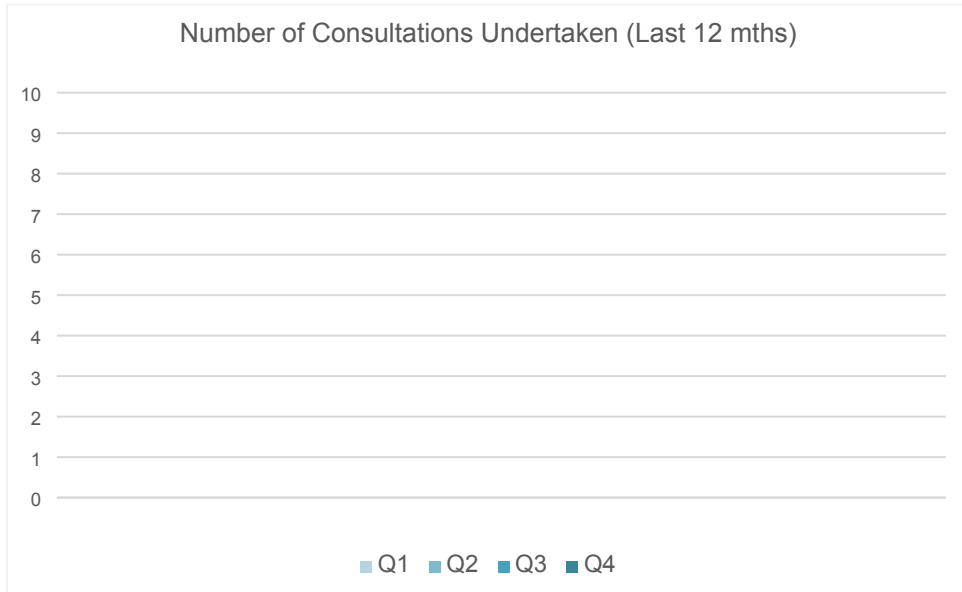
Referrals Received (Last 12 mths)



Quarterly Overview	Totals
Total number of individuals worked with	115
Total number being case loaded	115
Total number engaging in programme based activity	N/A
Total number stepping up to Social Services	7
Total number being stepped down from Social Services	0
Total number closed with positive change	9
Total number closed with no engagement	1
Total number of consultations undertaken	N/A
Total number of requests for service	53

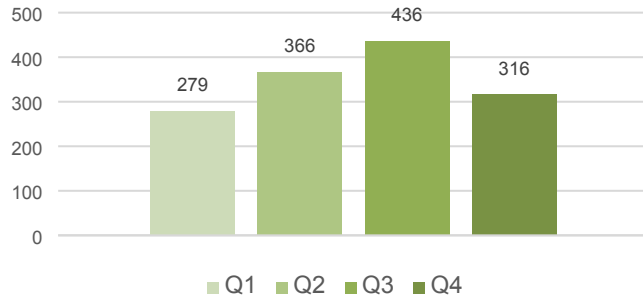
What's working well?	What are we worried about?	What do we need to do?

Early Help / Prevention – Early Intervention Service – Family Wellbeing Team

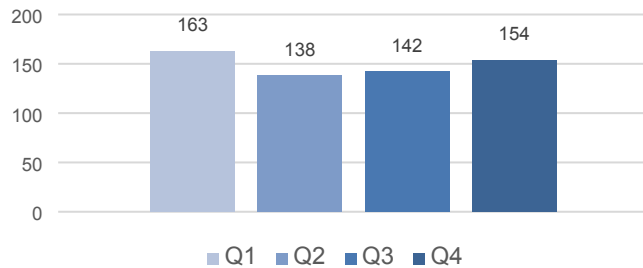


Early Help / Prevention – Early Intervention Service – Jigso

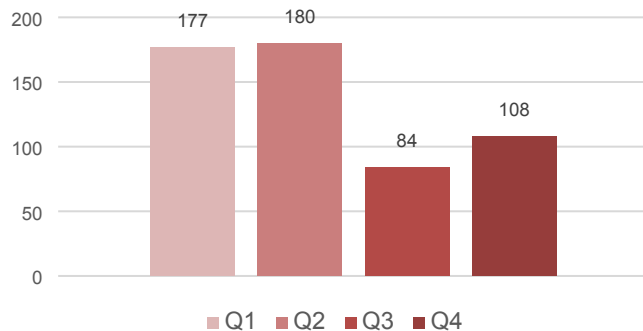
No. of Individuals Worked With (Last 12 mths)



No of Individuals on Caseloads (Last 12 mths)



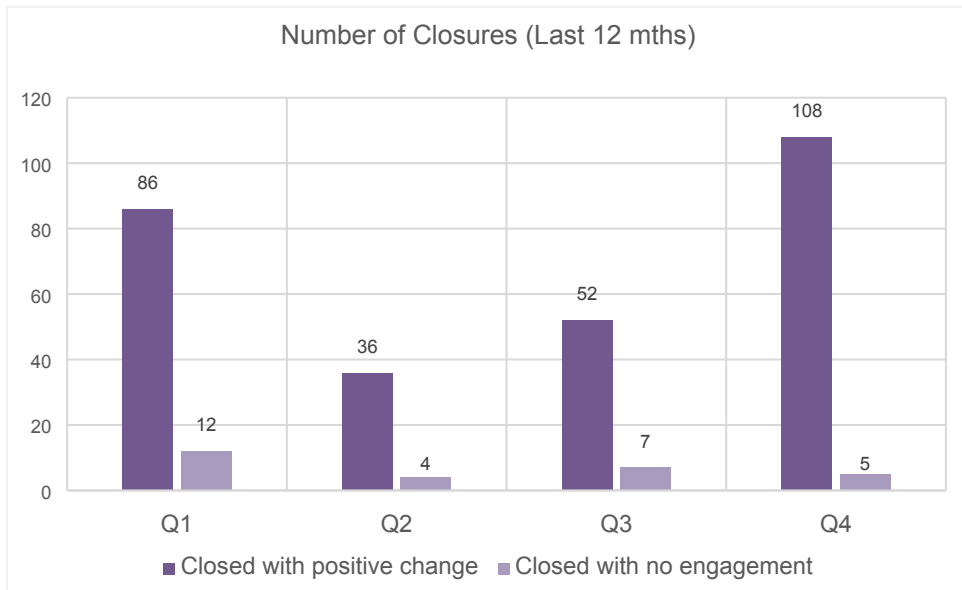
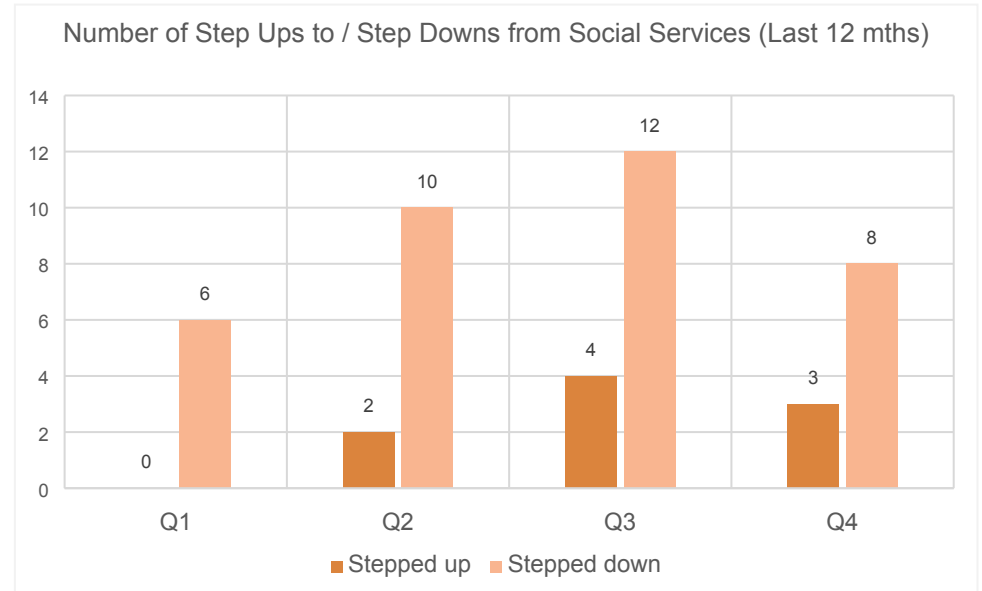
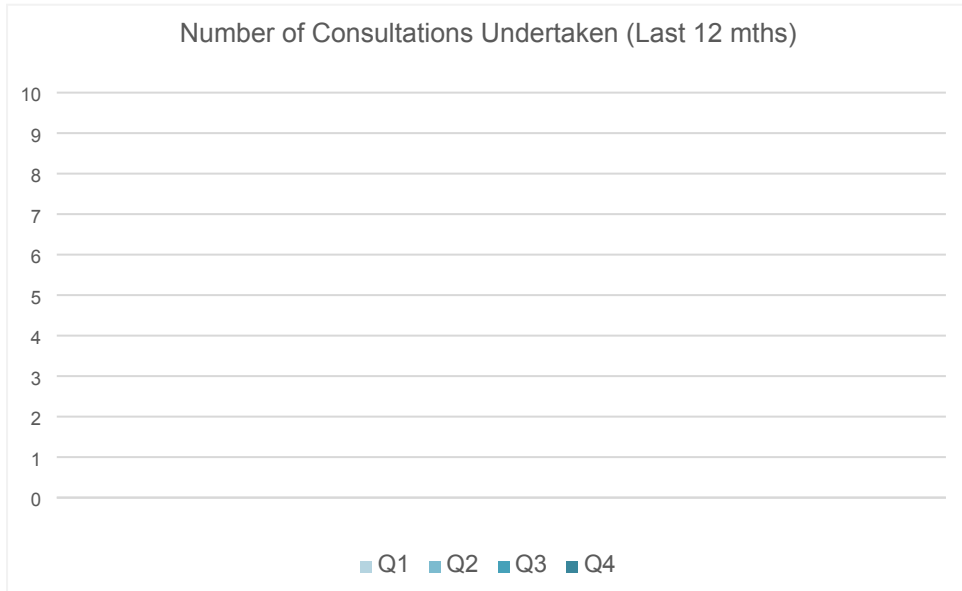
Referrals Received (Last 12 mths)



Quarterly Overview	Totals
Total number of individuals worked with	316
Total number being case loaded	154
Total number engaging in programme based activity	18
Total number stepping up to Social Services	3
Total number being stepped down from Social Services	8
Total number closed with positive change	108
Total number closed with no engagement	5
Total number of consultations undertaken	N/A
Total number of requests for service	108

What's working well?	What are we worried about?	What do we need to do?

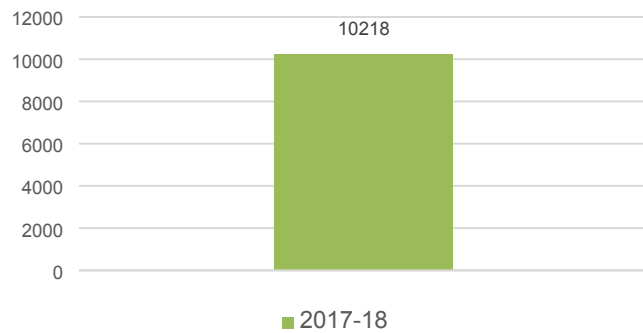
Early Help / Prevention – Early Intervention Service – Jigso



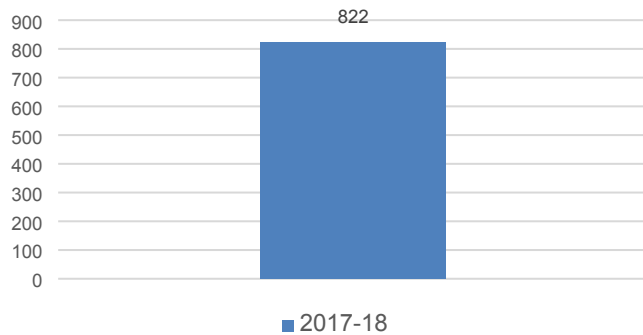
Other comments

Early Help / Prevention – Early Intervention Service – Other Families First Funded Projects

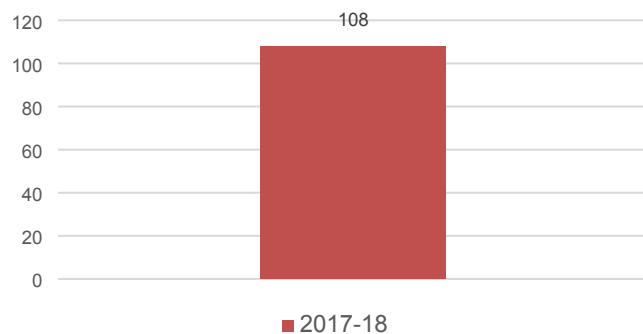
No. of Individuals Worked With



No of Individuals on Caseloads



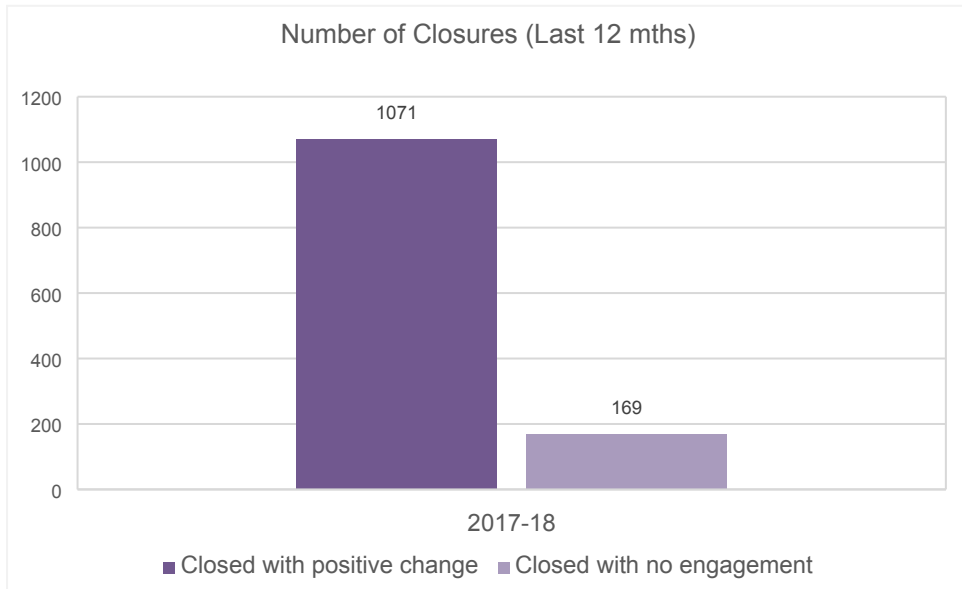
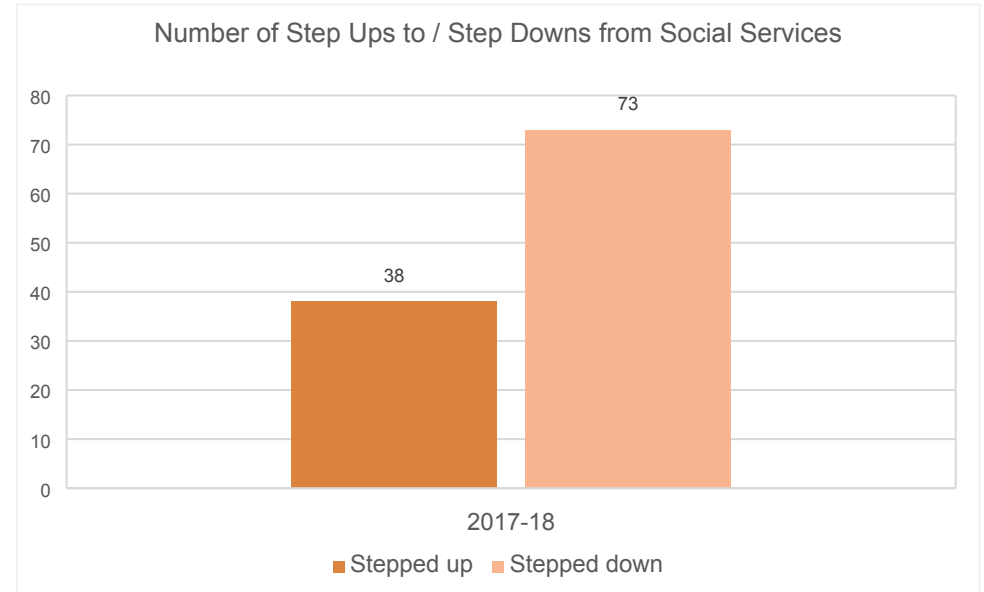
Referrals Received



Yearly Overview (2017-18)	Totals
Total number of individuals worked with	10218
Total number being case loaded	822
Total number engaging in programme based activity	341
Total number stepping up to Social Services	38
Total number being stepped down from Social Services	73
Total number closed with positive change	1071
Total number closed with no engagement	169
Total number of consultations undertaken	N/A
Total number of requests for service	108

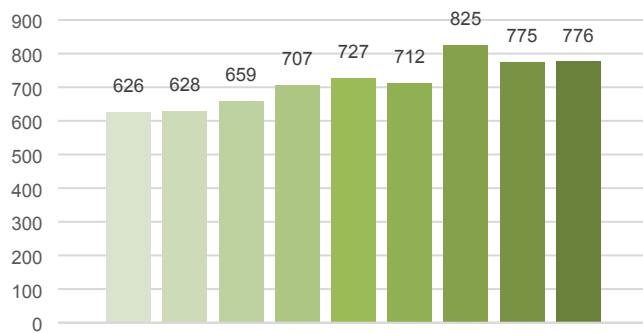
What's working well?	What are we worried about?	What do we need to do?

Early Help / Prevention – Early Intervention Service – Other Families First Funded Projects

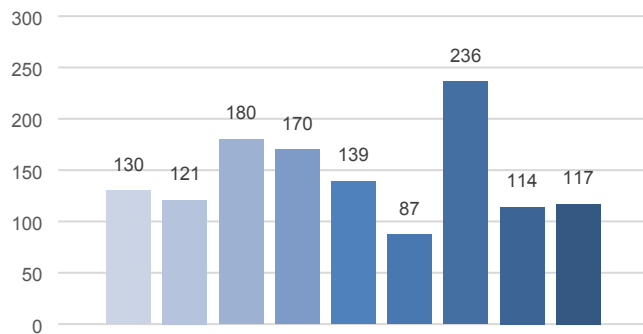


Early Help / Prevention – Partnership & Commissioning Team – DA Hub

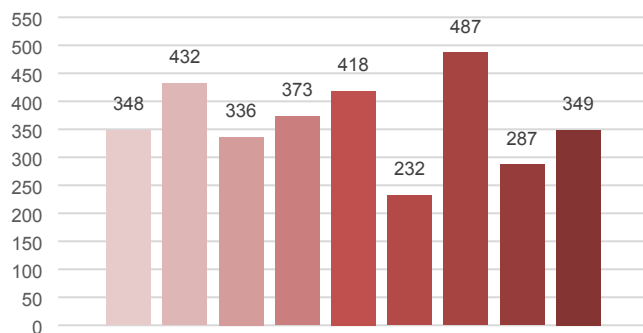
Number of Individuals Worked With (9 mths)



No of Individuals on Caseloads (9 mths)



Referrals Received (9 mths)

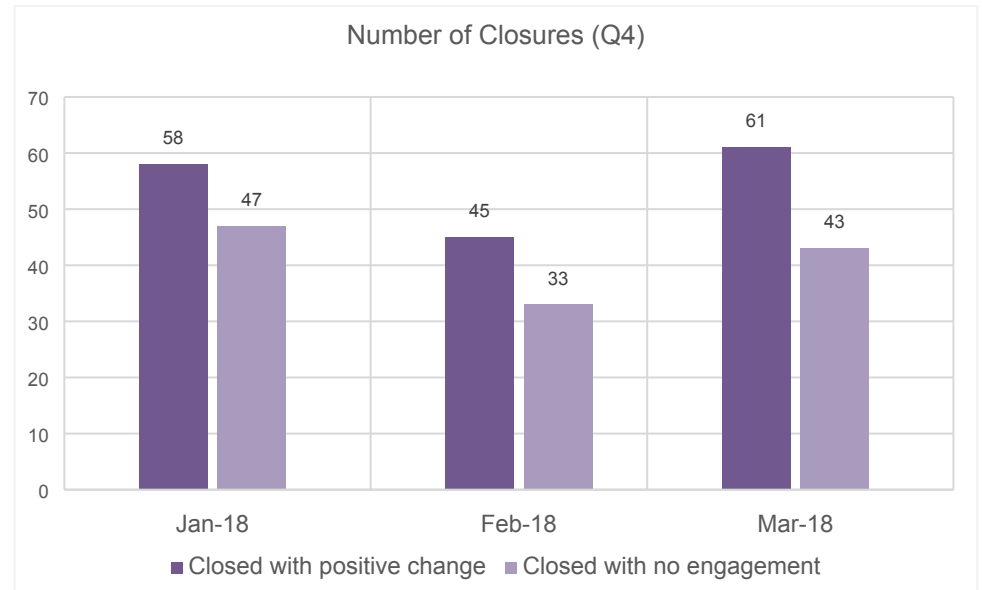
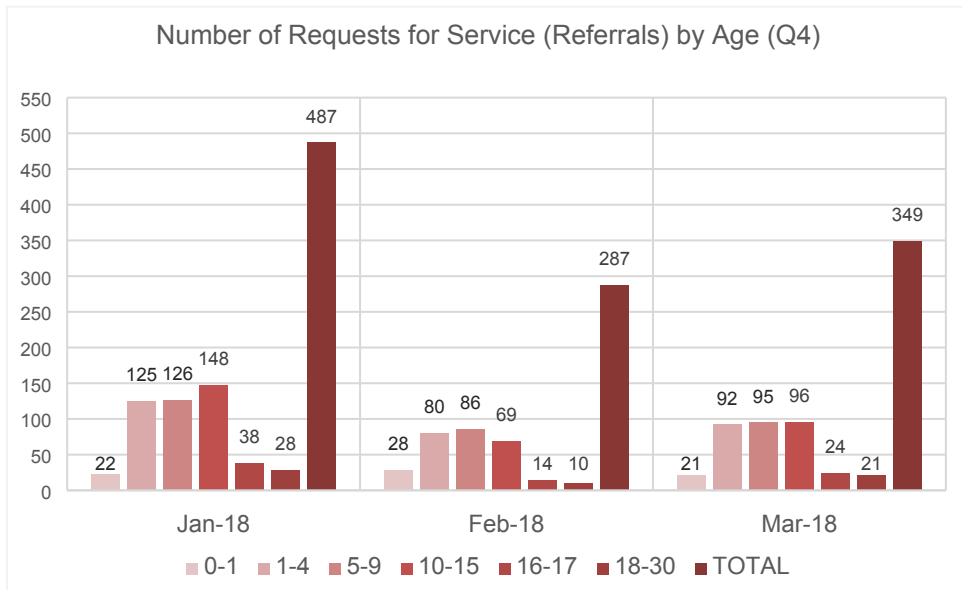
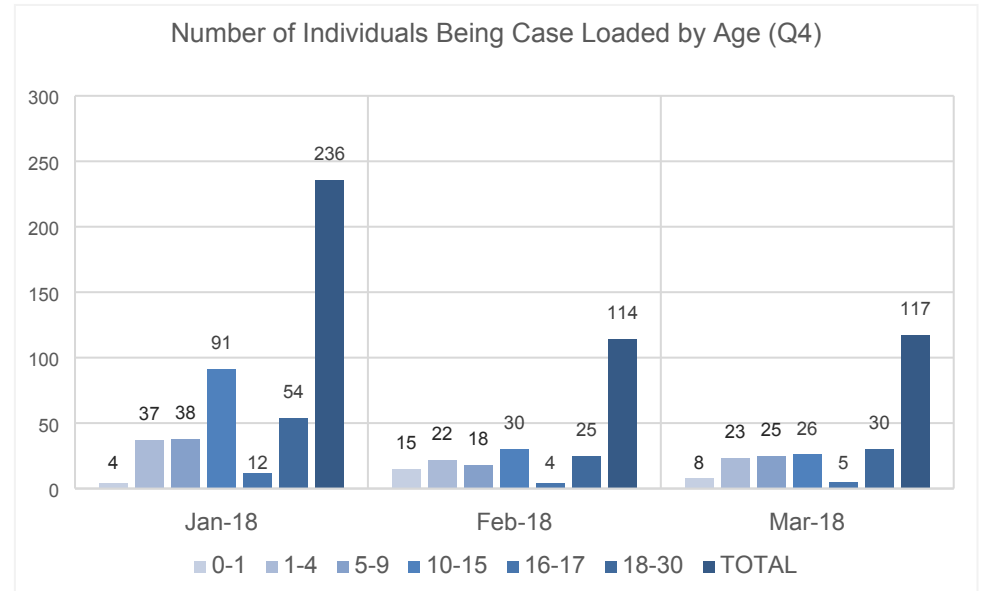
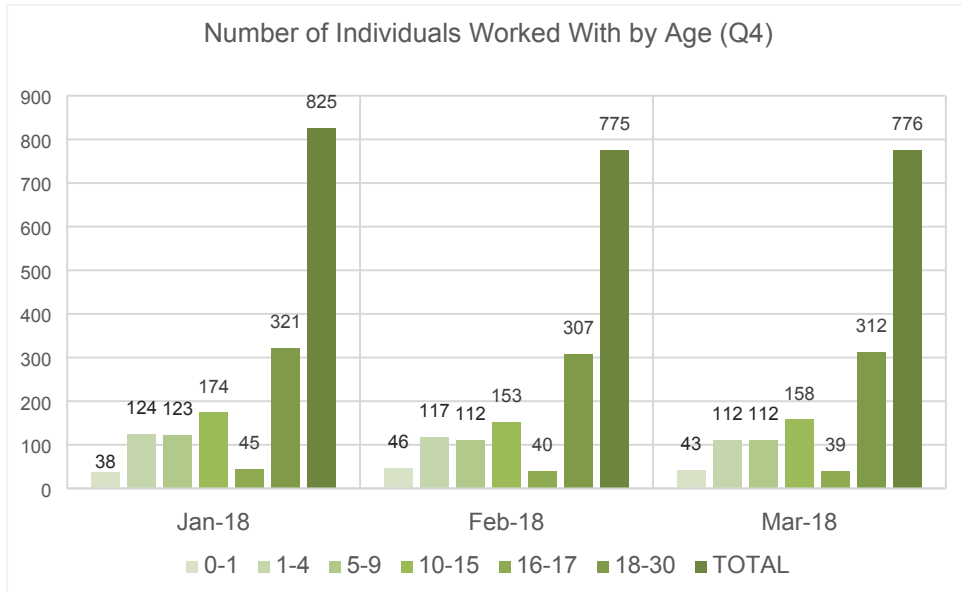


Quarterly Overview	Totals
Total number of individuals worked with	825
Total number being case loaded	236
Total number stepped up to Social Services	N/A
Total number stepped down from Social Services	N/A
Total number closed with positive change	164
Total number closed with no engagement	123
Total number of consultations undertaken	N/A
Total number of requests for service (referrals)	1,123
Programme delivery - Equilibrium	

Some of the above are snapshot figures as at the end of the quarter rather than a total across the three months

What's working well?	What are we worried about?	What do we need to do?

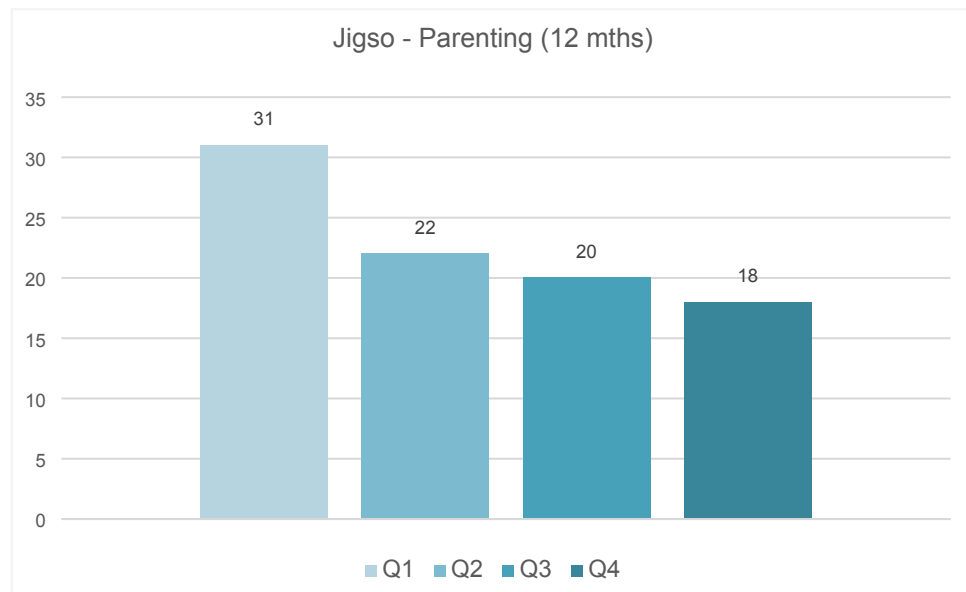
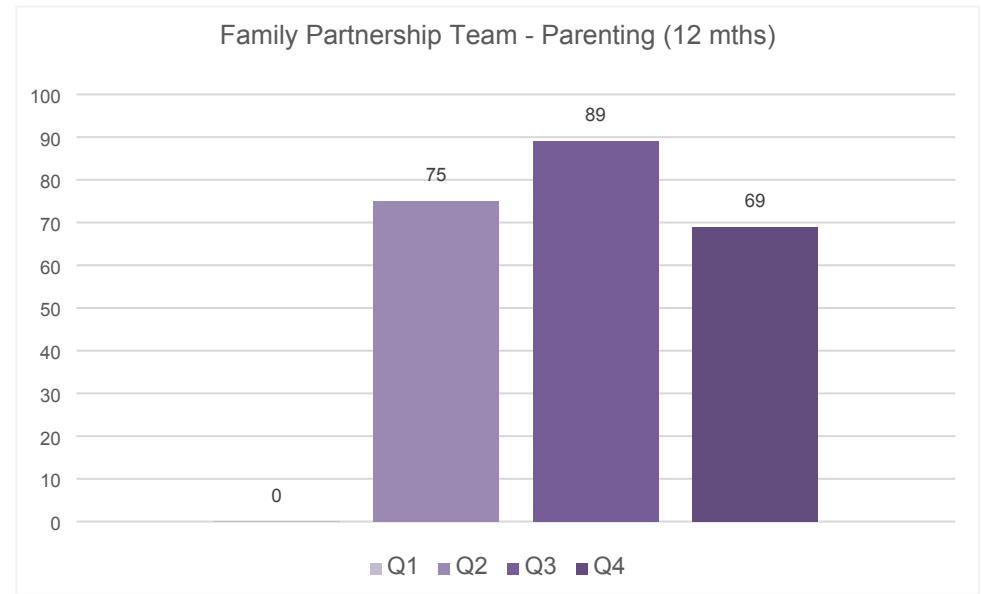
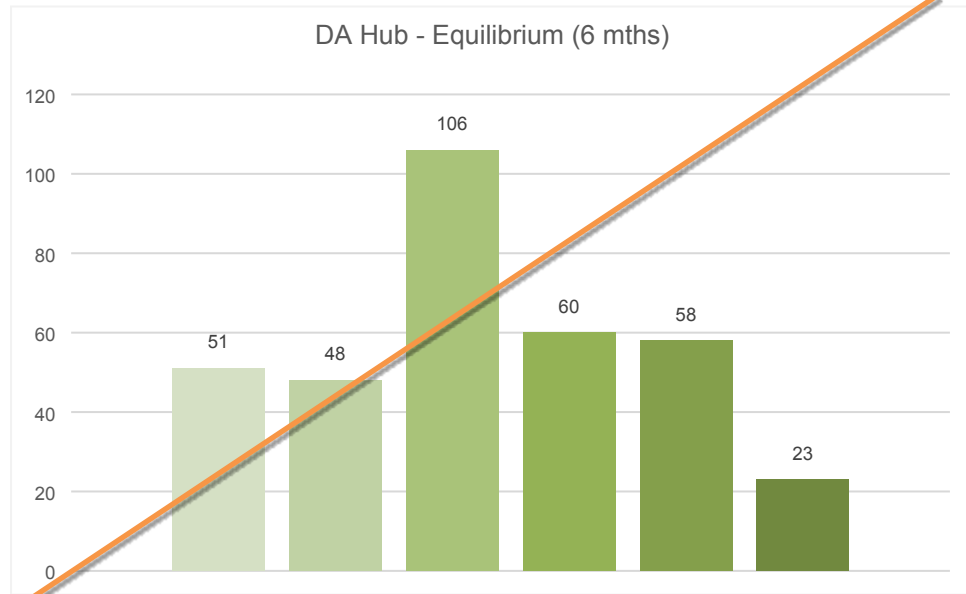
Early Help / Prevention – Partnership & Commissioning Team – DA Hub



Section 3 – Programme Delivery



Programme Delivery Overview

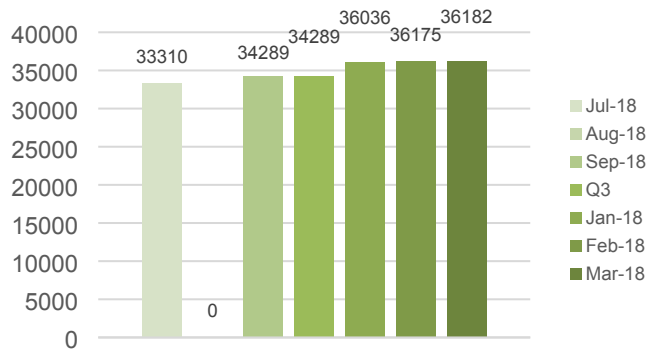


Section 4 – Other Specialist Areas

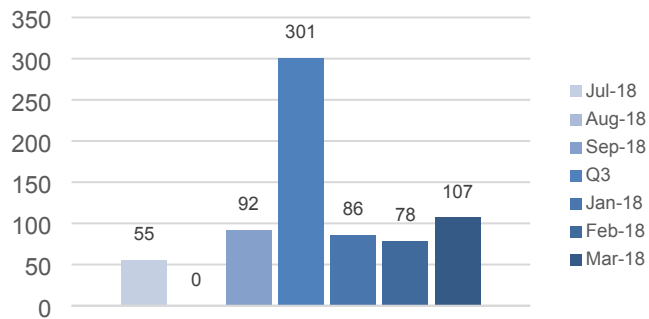


Other Specialist Areas – Education

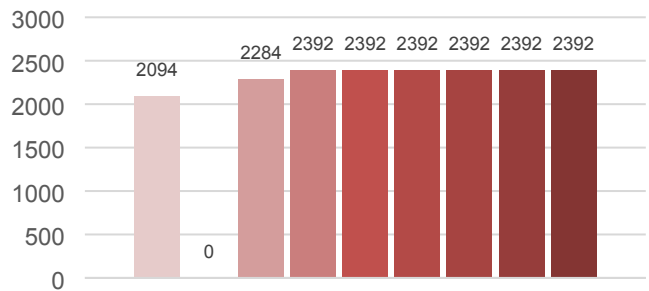
Number of Pupils in Swansea Schools (9 mths)



No of Fixed Term Exclusions (9 mths)



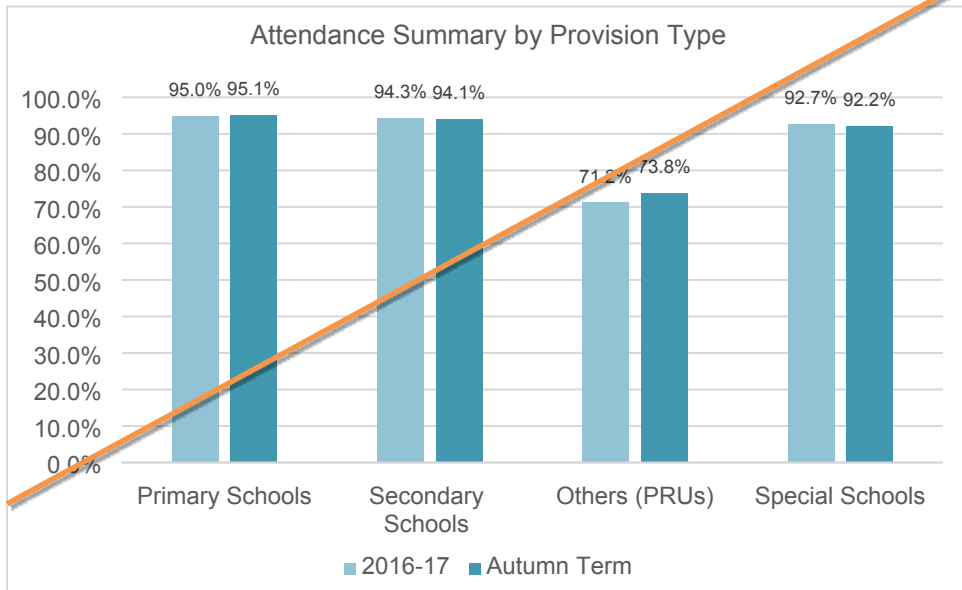
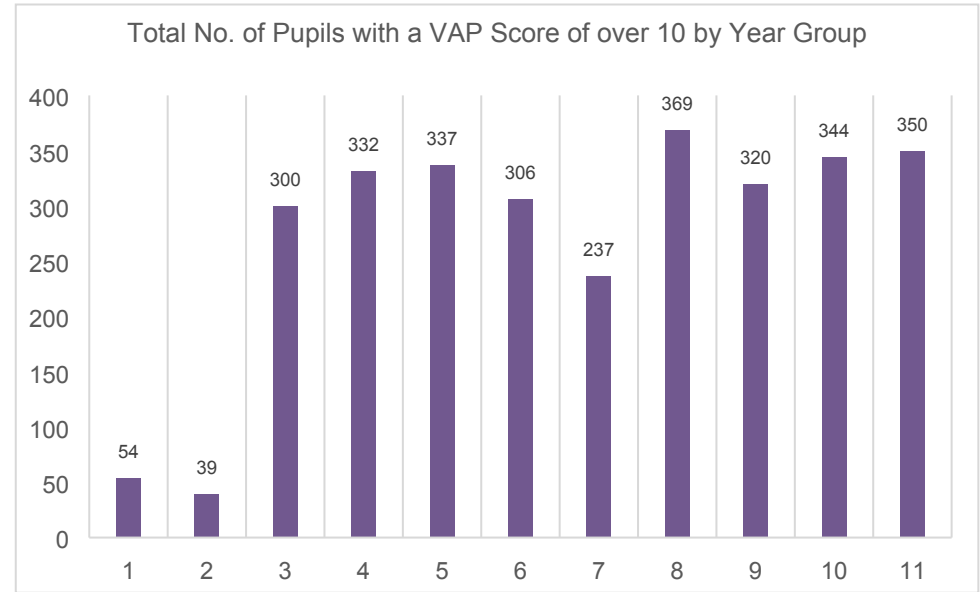
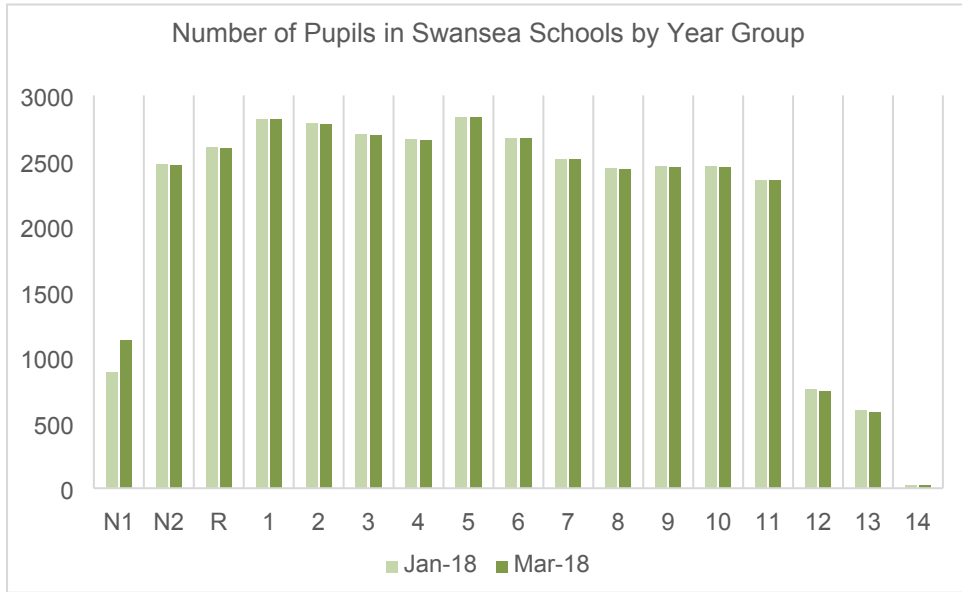
Total Number of Pupils with School Action + (9 mths)



Quarterly Overview	Totals
Total number of pupils in Swansea schools	36182
Total number of pupils with a VAP score of over 10	2988
Percentage of pupils with a VAP score of over 10	8.3%
Total number of fixed term exclusions	271
Total number of days lost through exclusions	639
Total number of young people with School Action +	2392

What's working well?	What are we worried about?	What do we need to do?

Other Specialist Areas – Education



Other comments

Note - VAP is annual so same figures each month although percentages will differ slightly as year group sizes vary a bit.

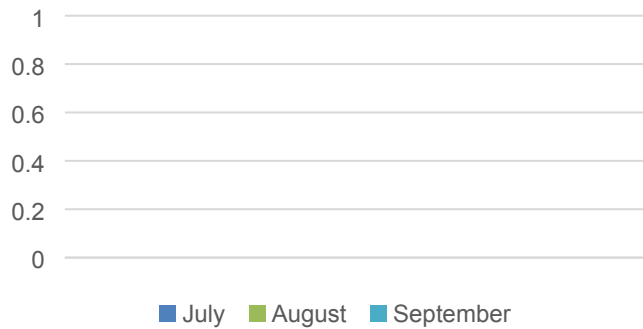
School Action Plus is from PLASC so again same figures each month.

Exclusion figures will be lower in months where school holidays fall!

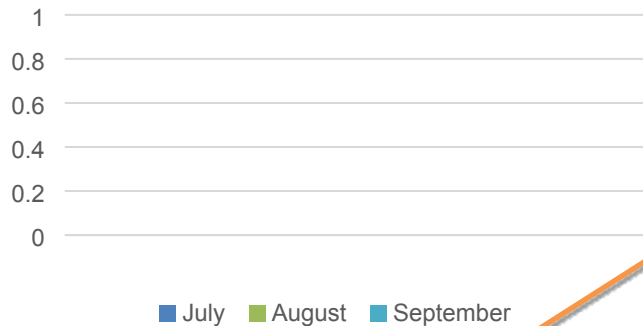
VAP scores are lower for years 1 and 2 as they don't have national test results (maybe change to use 7+ for those year groups?).

Other Specialist Areas – Education Welfare Service

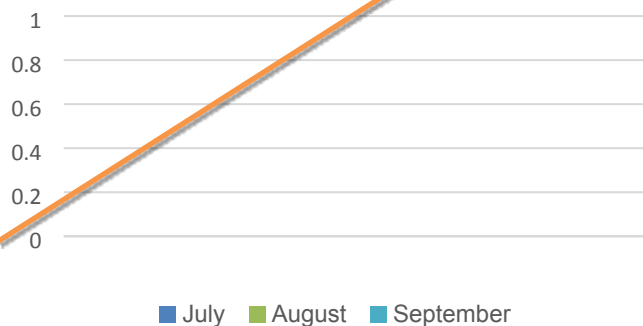
Number of Individuals Worked With



No of Individuals on Caseloads



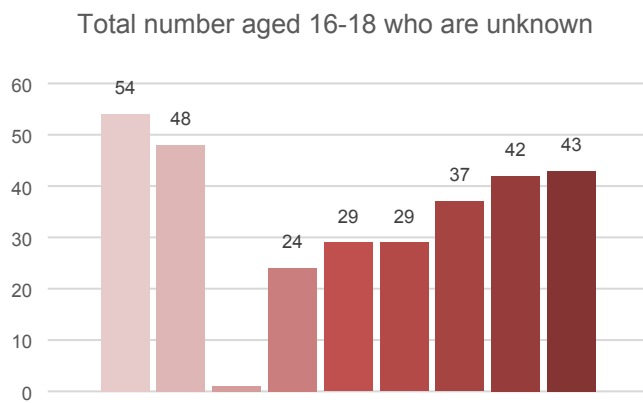
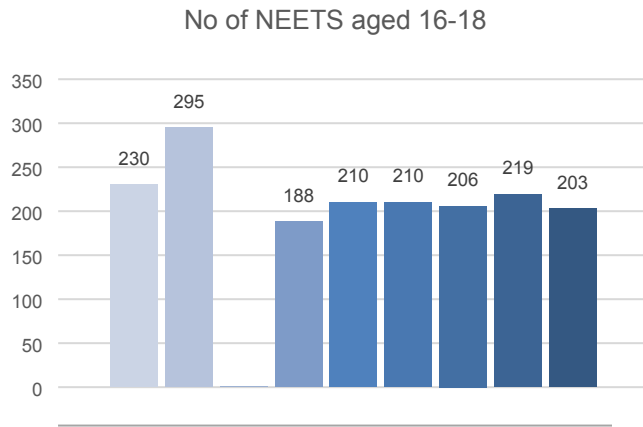
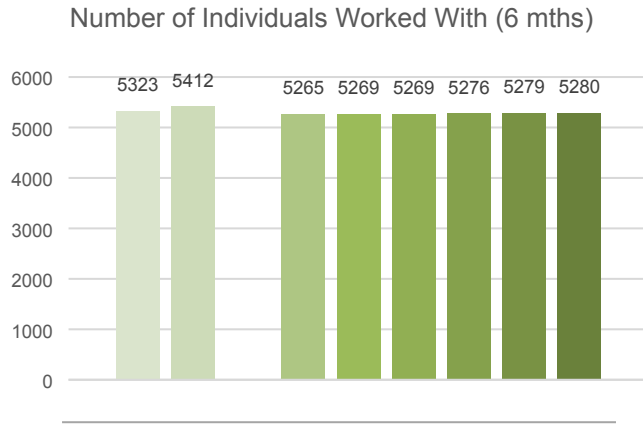
Requests Received



Quarterly Overview	Totals
Total number of individuals worked with	
Total number being case loaded	
Total number of fixed penalty fines	
Total number of prosecutions	
Total number closed with positive attendance change	
Total number of pupils 'missing from education'	
Total number of pupils 'educated at home'	
Total number of requests for service (referrals)	

What's working well?	What are we worried about?	What do we need to do?

Other Specialist Areas – 5 Tier Model



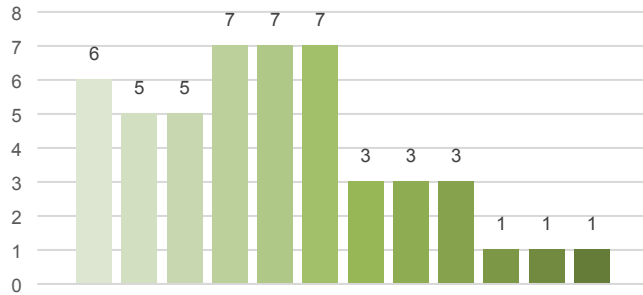
Quarterly Overview	Totals
Total number of individuals aged 16-18 (post 16)	5280*
Total number of NEETs aged 16-18	203*
Total number aged 16-18 who are unknown (Tier 1)	43*
Total number aged 18-24 who are claiming JSA	
Total number of referrals made to other organisations	

(* Based on March 18 report)

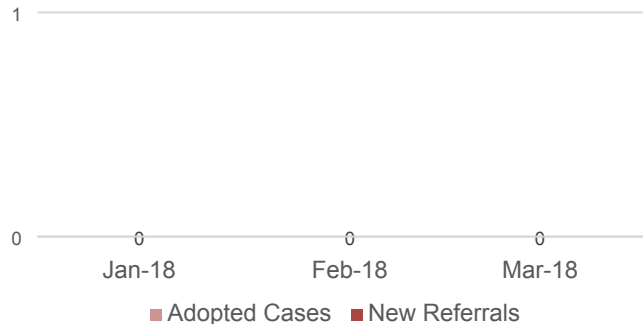
What's working well?	What are we worried about?	What do we need to do?

Other Specialist Areas – Prevent & Channel (Under 18s)

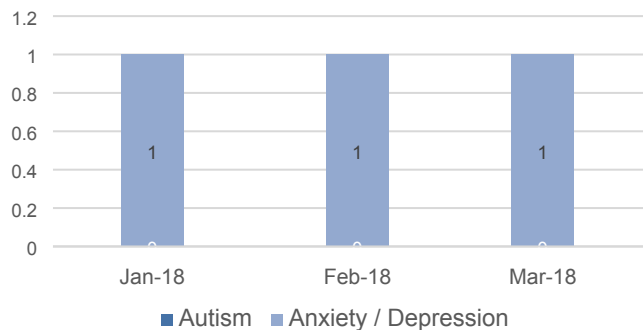
Individuals Worked with by Channel
(Last 12 mths)



Referrals and Cases (Q4)



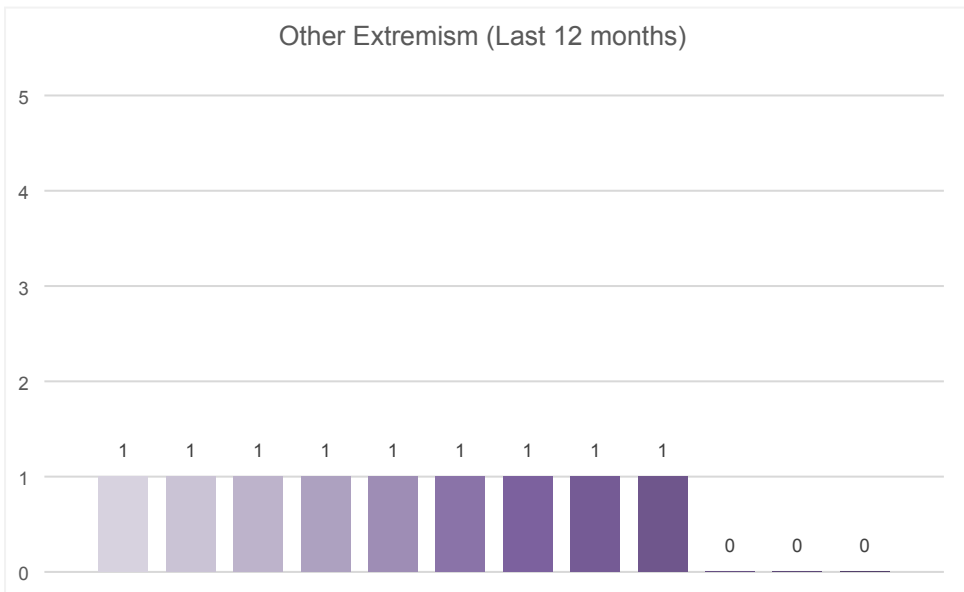
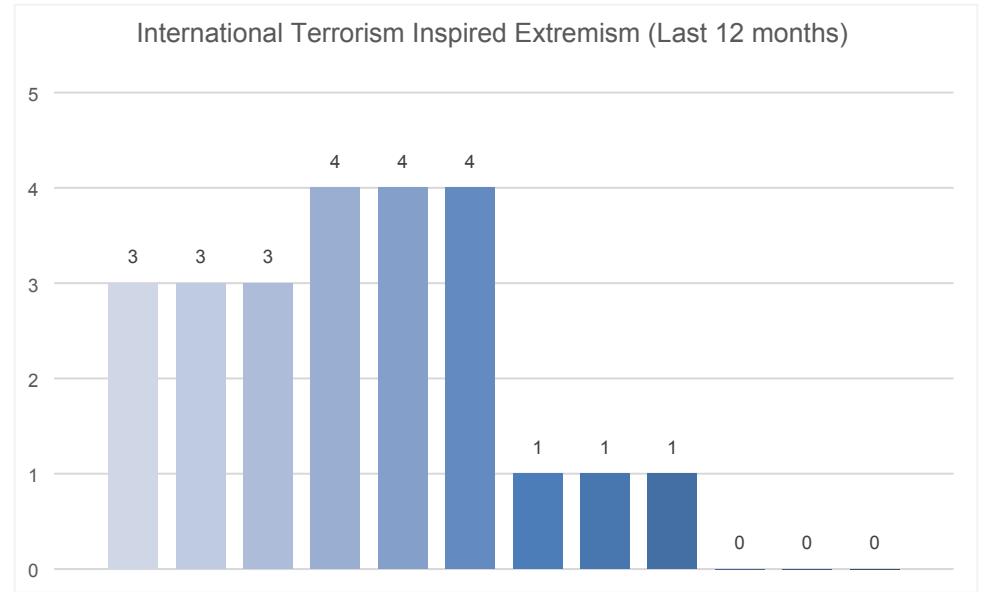
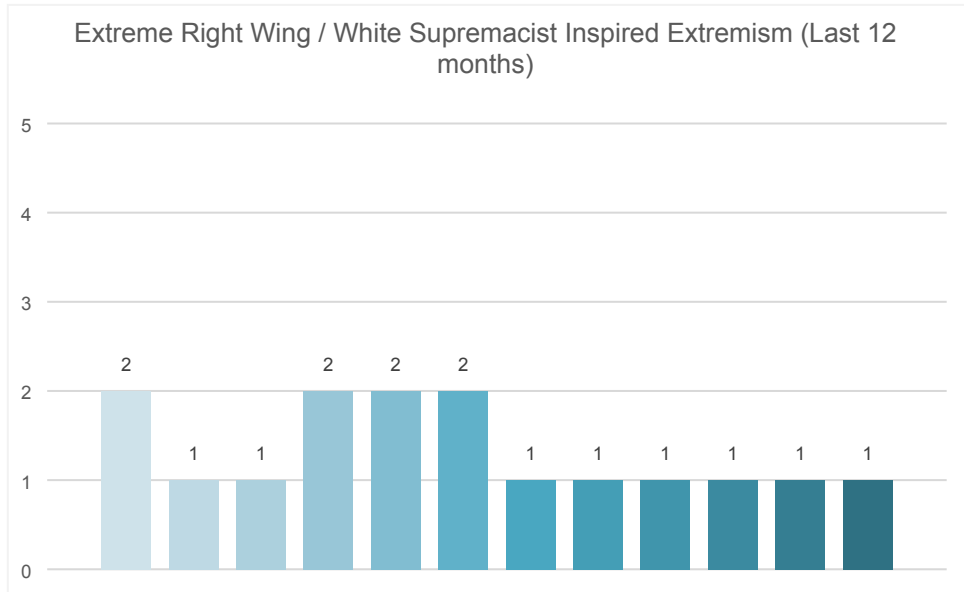
Cases with Underlying / Existing Issues (Q4)



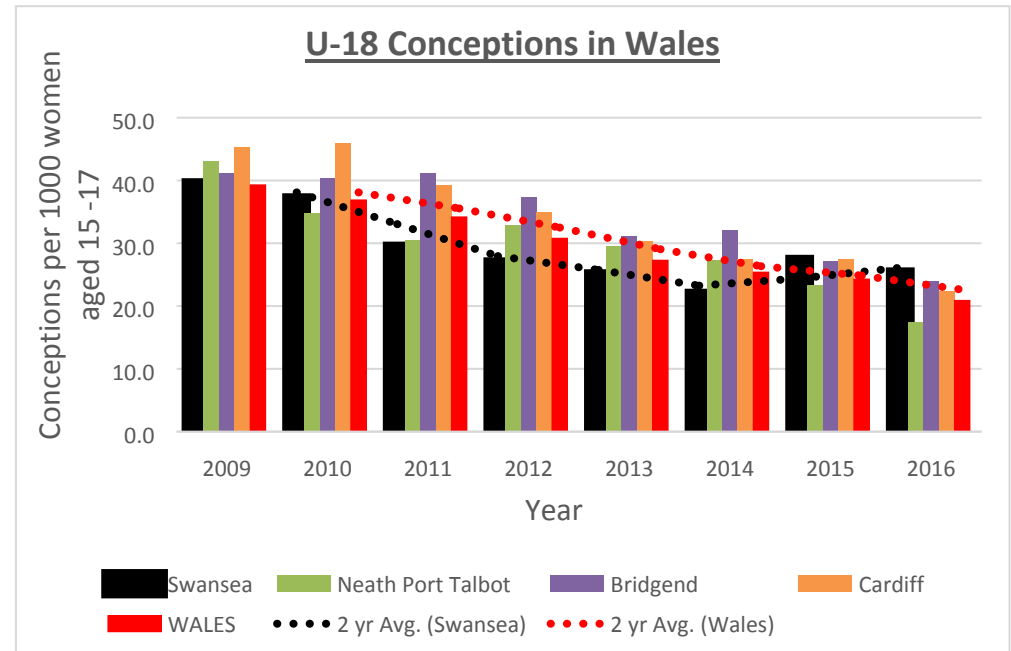
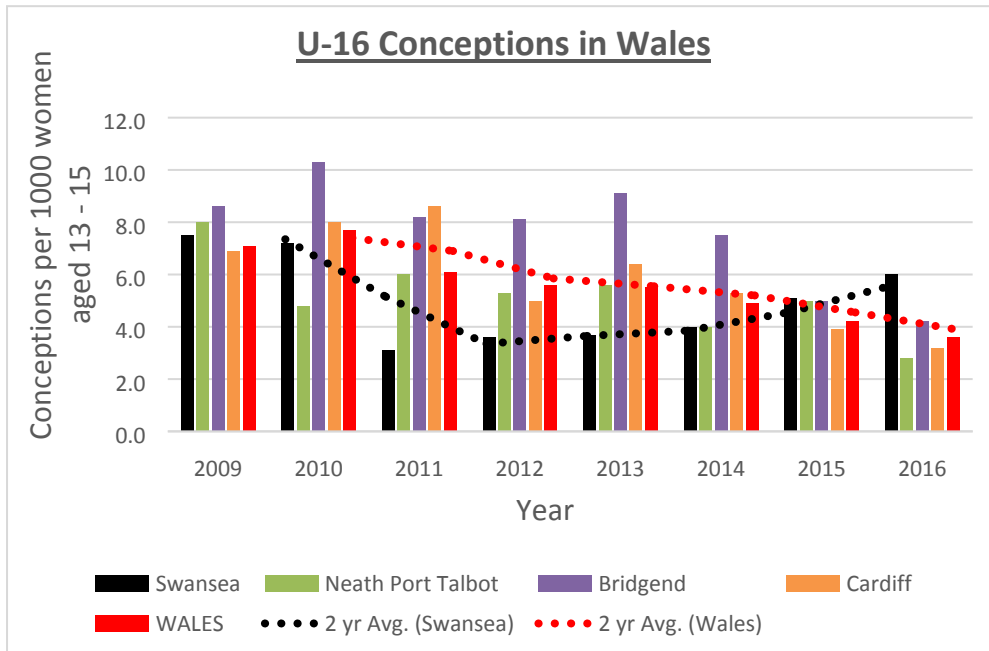
Quarterly Overview	Totals
Total number of individuals worked with aged under 18	1
Total number of new referrals	0
Total number of adopted cases	0
Type of Extremism - Extreme Right Wing / White Supremacist Inspired	1
Type of Extremism - International Terrorism Inspired	0
Type of Extremism – Other	0
Cases with Autism	0
Cases with anxiety / depression	1
Cases supported by Evolve (YPS)	0

What's working well?	What are we worried about?	What do we need to do?
<p>Prevent referral pathway for Social Services (C&F and Adult), with appropriate guide.</p> <p>Support through Evolve</p>	<p>That cases may not meet thresholds and slip through the net.</p> <p>Lack of information forthcoming from CAMHS that may affect what Channel intervention is commissioned.</p>	<p>Information sharing by CAMHS to Channel needs to improve, or, at least information shared by CAMHS to ABMU LHB Safeguarding on ABMU cases needs to improve so that ABMU Safeguarding rep may share with Channel.</p>

Other Specialist Areas – Prevent & Channel (Under 18s)



Other Specialist Areas – Teenage Pregnancy in Swansea



What's working well?	What are we worried about?	What do we need to do?

Notes – Performance Report – Quarter 4, 2017-18

